

### Auto-Up

Two types of Auto-Ups are available for the 50mm f:2.8, 50mm f:1.8, and 50mm f:1.5 lenses. Auto-Up No. 1 in each case has a focusing range between 22" and 40" from the film plane of the camera. Auto-Up No. 2 has a focusing range from 15" to 20" from the film plane of the camera. All objects between these distances may be accurately focused upon through the ordinary Rangefinder of the Canon Camera itself, with the Auto-Up in position.

These attachments are the ideal answers for the photographer who requires a lightweight portable close-up attachment for taking pictures of flowers, insects, and other small objects.

### Parallax Compensator

Using the Auto-Up alone, a certain amount of parallax is inherent. Normally this can be compensated for after some practice; but to facilitate focusing, Canon produces a special Parallax Compensator to be used together with the Universal Viewfinder, Universal Frame Finder or the Canon Zoomfinder. This Compensator fits on the accessory shoe of the Canon Camera and on it is mounted any of the above accessory Viewfinders. By using this equipment together with the Auto-Up, it is possible to eliminate parallax completely.

#### EXCLUSIVE 5 YEAR GUARANTEE

Only Canon fully protects the original purchaser of Canon equipment for a period of 5 years from date of purchase against all defects of materials or workmanship. During this period, free replacement in whole or part will be made of any duly registered factory equipment, provided the original purchaser registers with Canon Camera Co., Inc.



CANON CAMERA COMPANY, INC.

U. S. Factory Branch: 550 Fifth Avenue • New York 36, N. Y.  
312, Shimo-maruko-cho, Ohta-ku, Tokyo, Japan

# Canon

# LENSES

THE WORLD'S FINEST OPTICS

FOR PHOTOGRAPHY



# CANON LENSES



85mm



100mm



135mm



800mm

CANON lenses are held in the highest esteem by professional and amateur photographers the world over for their unsurpassed optical design and precision engineering. Many new optical features have been introduced by Canon and are now protected by U. S. patents. Canon has pioneered in the development of high speed wide angle lenses, opening new fields of photographic versatility to the serious photographer. For the first time, one can shoot anything that can be seen, with Canon. Now any focal length, 25mm through 50mm, can be used as a standard high speed lens with Canon and Canon-type cameras. Note that the Canon 25mm f:3.5, 28mm f:2.8, 35mm f:1.8 and 50mm f:1.2 are the fastest, professional quality lenses in the world—exclusively Canon's.

Before leaving the factory, Canon lenses must meet extremely rigid factory standards to assure the highest resolution, contrast, brilliance and color fidelity. Canon lenses with screw-type mounts may be used on all Canon-type cameras. All lenses are Spectra-coated<sup>(TM)</sup> internally and externally by a revolutionary process to assure maximum color and tone balance, greater light transmission and complete elimination of flare.

400 mm



50mm



35mm



28mm



25mm



100mm



135mm



400mm



800mm

85mm



**Canon.**

A LENS FOR EVERY PURPOSE

50mm



35mm



28mm



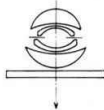
25mm





25mm f:3.5

This is a unique Ultra Wide Angle Lens giving the photographer a magnificently clean, sharp 82° angle of view at a speed never before possible. The lens elements are made of a new type of rare glass that has radically increased illumination. In spite of the unsurpassed angle of view, this lens is free of barrel distortion even when used wide open. Canon's new amber Spectra-coating (TM) has also been introduced with this lens to give life-like qualities in color photography. The very short focal length and high speed of this lens will give the most realistic photographs both indoors and outdoors. It is the perfect lens for landscapes, informal groups, and news shots.



**Lens Elements:** 5, Spectra-Coated(TM) internally and externally.

**Mount:** Rigid, non-collapsible.

**Lens Barrel:** Satin-chrome finish with Infinity Lock.

**Revolving lens elements.**

**Focusing:** 3.5 feet to infinity.

**Marked Apertures:** f:3.5 to f:22, with click stops.

**Angle of View:** 81 degrees.

**Magnification:** 0.5X.

**Attachment Size:** 40mm Series VI.

**Weight:** 4½ oz.

**Accessories:** Lens normally supplied with Special Dust Cap and Lens Cap. No Lens Hood is necessary and Filters are attached with an Adapter Ring and Adapter Ring Insert. Special Viewfinder and Leather Case are available as accessories.

This lens has been developed from Canon's original classic, the 28mm f:3.5. After four years of intensive study, this new lens has been introduced which is two times faster than any other commercially available Wide Angle lens of similar focal length. This new Gauss type lens has all the superlative qualities of its predecessor plus that added speed which makes it so perfect for available light photography. This lens is almost completely free of coma and other types of aberrations.



**Lens Elements:** 6, Spectra-Coated(TM) internally and externally.

**Mount:** Rigid, non-collapsible.

**Lens Barrel:** Satin-chrome finish with Infinity Lock. Non-revolving elements.

**Focusing:** 3.5 feet to infinity.

**Marked Apertures:** f:2.8 to f:22 with click stops.

**Angle of View:** 75 degrees.

**Magnification:** 0.56X.

**Attachment Size:** 40mm Series VI.

**Weight:** 6 oz.

**Accessories:** Lens normally supplied with Special Dust Cap and Lens Cap. No Lens Hood is necessary and Filters are attached with an Adapter Ring and Adapter Ring Insert. Special Viewfinder and Leather Case are available as accessories.

28mm f:2.8

28mm f:3.5

This is Canon's original extreme Wide Angle lens designed originally by Canon's own technicians in 1951. Today this lens is still accepted by professionals and amateurs as the standard in Wide Angle lenses. The continued popular demand of this lens has assured that the factory will continue production of it indefinitely.

**Lens Elements:** 6, Spectra-coated(TM) internally and externally.

**Mount:** Rigid, non-collapsible.

**Lens Barrel:** Satin-chrome finish with Infinity Lock.

**Non-revolving lens elements.**

**Focusing:** 3.5 feet to infinity.

**Marked Apertures:** f:3.5 to f:22 with click stops.

**Angle of View:** 75 degrees.

**Magnification:** 0.56X.

**Attachment Size:** 34mm Series VI.

**Weight:** 6.5 oz.

**Accessories:** Lens normally supplied with Dust Cap and Lens Cap. No Lens Hood is necessary and Filters are attached with an Adapter Ring and Adapter Ring Insert. Special Viewfinder and Leather Case are available.



## 35mm f:1.8



This seven element lens is the fastest Wide Angle lens commercially available today. Until Canon proved that it was possible to produce such a lens it was not considered possible. The entire field of 64° is both clean and sharp to an amazing degree. Canon's newly devised Spectra-coating™ makes this lens the color photographers' ideal. Several new types of rare glass have been employed in the construction of the lens elements so that this unit compares more than favorably with much slower Wide Angle lenses in curvature of field, definition and all the other inherent defects that confront the designer of the Wide Angle lenses. The magnificent results produced by this lens makes it ideal for indoor work as well as photographs taken out of doors of fast moving subjects.

This lens was especially produced in answer to the common complaint that the average high speed lens would not show enough of the picture field. The lens couples perfectly with the built-in 35mm Range-Viewfinder of the new Canon Model V.

**Lens Elements:** 7, Spectra-coated™ internally and externally.

**Mount:** Rigid, non-collapsible.

**Lens Barrel:** Light weight alloy. Satin-chrome and black anodized finish. Infinity Lock. Non-revolving lens elements.

**Focusing:** 3.5 feet to infinity.

**Marked Apertures:** f:1.8 to f:22, with click stops.

**Angle of View:** 64 degrees.

**Magnification:** 0.7X.

**Attachment Size:** 40mm Series V1.

**Weight:** 4½ oz.

**Accessories:** Lens normally supplied with Dust Cap and Lens Cap. A Standard line of accessories are available for this lens. Special Viewfinder and Leather Case are available as extras. No Special Viewfinder is necessary, however, on the Model V Canon Camera.

## 35mm f:2.8

This lens couples with the new built-in Range-Viewfinder of the Model V Canon Camera which makes an accessory Viewfinder unnecessary. It is the ideal standard lens for the photographer who does not require a super-fast lens but who still demands that his photographs in black-and-white or in color be sharp to the very edges of the picture, without sacrifice of perfect definition.

**Lens Elements:** 6, Spectra-coated™ internally and externally.

**Mount:** Rigid, non-collapsible.

**Lens Barrel:** Satin-chrome finish. Infinity Lock. Non-revolving lens elements.

**Focusing:** 3.5 feet to infinity.

**Marked Apertures:** f:2.8 to f:22, with click stops.

**Angle of View:** 64 degrees.

**Magnification:** 0.7X.

**Attachment Size:** 34mm Series V1.

**Weight:** 7.1 oz.

**Accessories:** Lens normally supplied with Dust Cap and Lens Cap. A standard line of accessories are available for this lens. Special Viewfinder and Leather Case are available as extras. No Special Viewfinder is necessary, however, on the Model V Canon Camera.



## 50mm f:1.2

Very few lenses faster than f:1.5 are able to give the photographer perfectly sharp definition. Normally, resolution and absence of vignetting must be sacrificed for speed. After several years of development, Canon has produced a lens that surpasses the resolution qualities of many commercial lenses with a wide open aperture of f:2. This remarkable new lens is based on the design of the Canon 50mm f:1.8 but it has seven Gauss-type elements instead of six. The over-all diameter of the lens is considerably greater than the 50mm f:1.8 which is one way of increasing the brilliance of this lens. In addition, the very new rare-earth compounds have been used to give added qualities of resolution and color correction. These new high-refraction types of glass have reduced aberration almost completely, not only in the center of the lens, but to the very extremities of the field even with the lens wide open. This lens will unquestionably revolutionize available-light photography.



**Lens Elements:** 7, Spectra-coated<sup>(TM)</sup> internally and externally.

**Mount:** Rigid, non-collapsible.

**Lens Barrel:** Light-weight alloy, Satin-chrome and black anodized finish. Non-revolving lens elements. Special type of infinity locking catch.

**Focusing:** 3.5 feet to infinity.

**Marked Apertures:** f:1.2 to f:22 with click stops.

**Angle of View:** 46 degrees.

**Magnification:** 1X.

**Attachment Size:** 54mm (Special Size).

**Weight:** 11 oz.

**Accessories:** Complete line of standard accessories available. Plastic or Leather Cases available.



This lens was originally introduced by Canon about four years ago, and due to its immense popularity, it has remained in production ever since. It is an ideal lens for available light photography or for difficult light situations. This lens has excellent resolution and is color corrected to the very fullest extent.

**Lens Elements:** 7, Spectra-coated<sup>(TM)</sup> internally and externally.

**Lens Mount:** Rigid, non-collapsible.

**Lens Barrel:** Satin-chrome finish. Infinity Lock. Non-revolving lens elements.

**Focusing:** 3.5 feet to infinity.

**Marked Apertures:** f:1.5 to f:16 with click stops.

**Angle of View:** 46 degrees.

**Magnification:** 1X.

**Attachment Size:** 40mm Series VII.

**Weight:** 10.4 oz.

**Accessories:** Plastic or Leather Cases available as extras.

This is Canon's standard 50mm lens designed from its own formula and based on the Gauss design, but mounted in a new lightweight barrel attractively finished in black to enhance the general appearance of this lens.



**Lens Elements:** 6, Spectra-coated<sup>(TM)</sup> internally and externally.

**Mount:** Rigid, non-collapsible.

**Lens Barrel:** Lightweight alloy, Satin-chrome and black anodized finish. Infinity Lock. Non-revolving lens elements.

**Focusing:** 3.5 feet to infinity.

**Marked Apertures:** f:1.8 to f:16 with click stops.

**Angle of View:** 46 degrees.

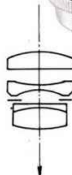
**Magnification:** 1X.

**Attachment Size:** 40mm Series VI.

**Weight:** 10 oz.

**Accessories:** Standard line of accessories available. Leather and Plastic Cases.

This attractive new lens takes the place of Canon's former 50mm f:3.5 lens. This faster new unit makes it the ideal universal lens not only mounted on the camera, but also for copy stand work, etc. Its very superior resolution makes it ideal for reproduction work both in black-and-white and in color.



**Lens Elements:** 4, Spectra-coated<sup>(TM)</sup> internally and externally.

**Mount:** Rigid, non-collapsible.

**Lens Barrel:** Lightweight alloy. Satin-chrome and black anodized finish. Infinity Lock. Non-Revolving Lens Elements.

**Focusing:** 3.5 feet to infinity.

**Marked Apertures:** f:2.8 to f:16 with click stops.

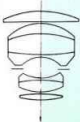
**Angle of View:** 46 degrees.

**Magnification:** 1X.

**Attachment Size:** 34mm Series VI

**Weight:** 5 oz.

**Accessories:** Standard line of accessories available. Leather and Plastic Cases.



Here again Canon leads the field in Ultra High Speed, long-focus lenses. The unique design of this lens makes it the ideal portrait lens where adequate light is not available. It is ideal for photography in the theater where flash guns cannot be used. Handsomely black anodized finish.

**Lens Elements:** 7, Spectra-coated<sup>(TM)</sup> internally and externally.

**Mount:** Rigid, non-collapsible.

**Lens Barrel:** Lightweight alloy, Satin-chrome and black anodized finish. Non-revolving Lens Elements.

**Focusing:** 3.5 feet to infinity.

**Marked Apertures:** f:1.5 to f:16 with click stops.

**Angle of View:** 29 degrees.

**Magnification:** 1.7X.

**Attachment Size:** 58mm Screw-in Series VII (Special Size Attachments).

**Weight:** 27 oz.

**Accessories:** Special Viewfinder and Leather Case are available. Special Size Attachments available.



85mm f:1.9

There is no question that the finest long-focus lens available today is Canon's 85mm f:1.9. The unrivaled sharpness of this lens makes it possible to enlarge the original negative by many diameters. This lens is especially popular among press photographers, professionals and the advanced amateur who demands the very best.



**Lens Elements:** 6, Spectra-coated™ internally and externally.

**Mount:** Rigid, non-collapsible.

**Lens Barrel:** Satin-chrome finish. Non-revolving Lens Elements.

**Focusing:** 3.5 feet to infinity.

**Marked Apertures:** f:1.9 to f:16 with click stops.

**Angle of View:** 29 degrees.

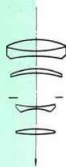
**Magnification:** 1.7X.

**Attachment Size:** 48mm Screw-in Series VII.

**Weight:** 22 oz.

**Accessories:** Standard line of accessories available. Plastic and Leather Cases.

The popularity of this lens has been justly deserved. This was Canon's first effort at lightweight alloy lens barrel construction, and it has remained one of the most popular of the Canon Camera lenses for many types of work. Among bird watchers, game hunters, and sportsmen in general, this lens has proved its worth many times. Its extreme lightness makes it handy to carry about and its versatility for close-up shots or for distance photography make it the first choice of those photographers who are not able to carry about with them a large number of lenses at one time.



**Lens Elements:** 5, Spectra-coated™ internally and externally.

**Mount:** Rigid, non-collapsible.

**Lens Barrel:** Lightweight alloy in satin-chrome and black anodized finish. Non-revolving Lens Elements.

**Focusing:** 3.5 feet to infinity.

**Marked Apertures:** f:3.5 to f:22.

**Angle of View:** 24 degrees.

**Magnification:** 2X.

**Attachment Size:** 35mm Series VI.

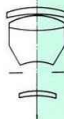
**Weight:** 7.2 oz.

**Accessories:** Standard line of accessories available.

100mm f:3.5

14 135mm f:3.5

The Canon 135mm f:3.5 telephoto lens is highly recommended where large magnification is necessary but where speed is also essential. This lens is almost completely free of aberration and can be especially recommended for aerial photography.



**Lens Elements:** 4, Spectra-coated™ internally and externally.

**Mount:** Rigid, non-collapsible.

**Lens Barrel:** Satin-chrome finish. Non-revolving Lens Elements.

**Focusing:** 5 feet to infinity.

**Marked Apertures:** f:3.5 to f:22 with click stops.

**Angle of View:** 19 degrees.

**Magnification:** 2.7X.

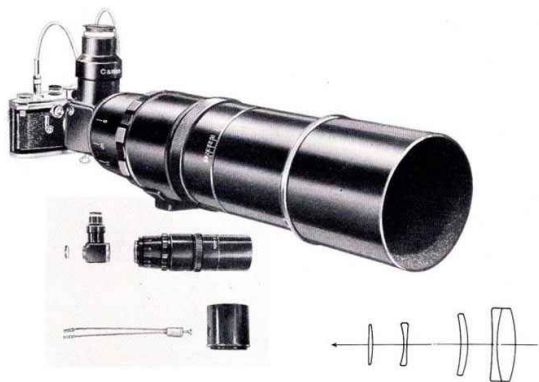
**Attachment Size:** 48mm Series VII

**Weight:** 21 oz.

**Accessories:** Standard line of accessories available.



## 400mm f:4.5



This is Canon's longest focal length lens which gives a magnification of 16X the 50mm standard lens. A special reflex mirror box is provided which gives a direct, erect image of the subject. Here is the ideal lens for photographing sports events and animal wildlife at extreme ranges. It is especially recommended for use with infrared film.

**Lens Elements:** 2, Spectra-coated<sup>(TM)</sup> internally and externally.

**Mount:** Rigid, non-collapsible. Non-revolving lens elements.

**Lens Barrel:** Black anodized finish.

**Focusing:** 22mm (72.2 ft.) to infinity.

**Marked Apertures:** f:8 to f:32.

**Angle of View:** 3 degrees.

**Accessories:** The following accessories are provided: Mirror Box Double Cable Release and Eyepiece, Tripod, dual platform, legs fold in two sections. Filters Orange and Red 1, hood, Wooden Carrying Case.

This telephoto lens has been recently introduced into the Canon System of Photography. Both the lens barrel and the reflex mirror housing have ASA tripod sockets, and may be mounted on any ordinary, sturdy tripod.

The lens barrel has been coated especially to resist extremes in weather conditions.

A unique feature is the fact that the filters are fitted between the camera and the reflex viewer so that a very bright image can be seen through the viewer, and also permits an economical size filter to be used.

**Lens Elements:** 5, Spectra-coated<sup>(TM)</sup> internally and externally. 4 Elements in Viewer lens.

**Mount:** Rigid, non-collapsible.

**Lens Barrel:** Black anodized finish.

**Focusing:** 8 meters to infinity.

**Marked Apertures:** f:4.5 to f:45.

**Angle of View:** 6 degrees.

**Magnification:** 8X.

**Accessories:** Lens supplied with Lens Hood (which should be used at all times), Reflex Housing, Twin Cable Release, set of special size Filters (UV, Yellow, Orange, Red No. 1 and Red No. 2), Wooden Carrying Case.



800mm f:8.0

All Canon wide-angle and long focal length lenses are available with special viewfinders which show the exact field of view recorded by the lens itself. Two types of special viewfinders are available for each lens. The first type is for the Model IVS2 and all other Canon cameras except the Model V.

The long focal length and telephoto special viewfinder in this first group allows for parallax adjustment. The second type of special viewfinder has been designed for the Model V Canon camera only, and in this case, parallax compensation is automatic.

In addition to the special viewfinders enumerated above, Canon produces other types of accessory viewfinders.



**ZOOMFINDERS:** These are a remarkable achievement from Canon's optical laboratory.

#### ZOOMFINDER "S"

A universal-type zoomfinder which shows exact field of view, and compensates automatically for 35mm, 40mm, 44mm and 50mm lenses and to 21mm with accessory front attachment.

#### ZOOMFINDER "L"

Similar to the above, but for 85mm, 90mm, 100mm and 135mm lenses.

The eye-piece of the Canon zoomfinder is adjustable to compensate for individual differences in eye-sight. The advantages of this viewfinder are that not only can the exact view be seen through the specially designed prisms, but there is no adjustment necessary for parallax or for distance, so that sighting and composing are instantaneous.



#### UNIVERSAL VIEWFINDER

The universal viewfinder may be used on any Canon camera and it gives a sharp, erect image for all lenses with focal lengths between 35mm and 135mm. Eye-piece adjustment is possible to compensate for differences in individual eye-sight. Built-in parallax compensating scale.

With an accessory front attachment, the universal viewfinder may also be used with either of Canon's 28mm lenses, or with Canon's 25mm lens.



#### UNIVERSAL FRAME FINDER

This frame finder is especially suitable for fast moving action photography, or for photographing in very poor light. Various frame sizes are available showing the field of view for 50mm, 85mm, 100mm and 135mm lenses. Parallax compensating scale is incorporated.



#### FILTERS

Canon filters are true optical flats, mounted in chromium-plated brass rings. The following filters are currently available for Black and White Photography:

1. A set of 5 filters in matching colored plastic cases sold separately or as a set. Series 6 and Series 7 sizes available. These filters must be used with a lens hood and an adapter ring or with an adapter ring and an adapter ring insert. The set consists of: yellow 1, yellow 2, green, orange, red.
2. Similar filters are available for the 85mm f:1.5 lens but in this case the filters screw into the lens barrel, and an adapter ring is not necessary.
3. Five special sized filters are normally supplied with the Canon 400mm f:4.5 lens. UV, yellow, orange, red 1 and red 2.
4. Two special sized filters are normally supplied with the 800mm f:8 lens, red and orange.

**Filters for Color Photography:** UV filters are available in Series 6, and screw-in 34mm and 40mm sizes, for color or black and white photography.

#### LENS HOOD

The Canon Lens Hood is optically designed as accurately as any other component of the Canon System of Photography, to give maximum advantage to the use of any lens. Each Canon lens has its own specifically designed Lens Hood which should be used at all times both in ordinary daylight and flash photography. The principal use of a Lens Hood is to protect the lens itself from all reflected light which does not actually contribute to the taking of the picture.

All Lens Hoods except the 85mm f:1.5, 400mm, 800mm are supplied with Adapter Rings. Leather cases are available for Wide Angle and 50mm lens hoods as an accessory. Provision is made in the leather carrying case of long focal length lenses (except the 85mm f:1.5) to accommodate the Lens Hood.