

CLARUS
CAMERAS

PRECISION BUILT

with

VELOSTIGMAT *Coated* LENS

MAKES

Clearer Pictures

CLARUS

CAMERA MANUFACTURING CO.
MINNEAPOLIS 4, MINNESOTA

CLARUS



SPECIFICATIONS - CLARUS CAMERA - MODEL MS-35

FOREWORD

**HERE'S SOMETHING REALLY NEW IN AMERICAN CAMERAS.
A PRECISION BUILT 35 MM CAMERA THAT WILL GET THE PICTURE.**

So easy to operate . . . so simple to handle . . . so well engineered that it will never miss the picture.

All controls are easily visible and need only a split second for the shutter and diaphragm stop changes.

Equipped with an F2.8 coated lens, with sharp overall focus, free from glares and light halos, mounted in ridged barrel, satin finish.

LENS

Wollensak Velostigmat F2.8 2" Focus.
Color corrected.
Non-reflective coated increases effective aperture ratings.
Coupled to range finder.
Easy action focusing mount.
Range 3½ feet to infinity.

RANGE-FINDER

Split image type.
Extra large opening insures easy focus.
The range is from 3½ feet to infinity.

SHUTTER

Nylon curtains—both sides coated with natural rubber.
Focal plane intermittent action shutter.
All gears precision machined.
Corrosion resistant finish on parts.
Large curtain straps eliminate curtain failure.
Shutter wound automatically with film wind.
Extremely accurate.
Cold Climate tested.

FINDER

Built-in view finder.
Precision ground optics.

FILM

Standard daylight cartridge.
18 or 36 exposures.
Color or black and white.
Positive counter — easy reset.
Fool proof film advance.
Quick rewind.

BODY

Die-cast alloy.
Satin finish.
Covered with war proven
"Redolite"

DIMENSIONS & WEIGHT

2¼ x 3 x 6 inches.
Weight 30 ounces.



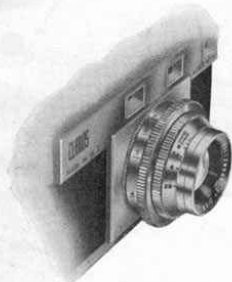
CONSTRUCTION FEATURES

The requirement of a successful 35 mm camera is the ease of handling plus the need for rigid construction, without bulk or extruding gadgets.

The Clarus meets these requirements fully. It is carefully designed and balanced so as to handle easy. All controls are easily accessible. All parts are neatly styled and carefully arranged for ease and speed of operation. The body is constructed of three die-cast parts—front case, top case, and back. These parts form a one-piece camera with ample strength to meet the severest requirements.



PRECISION FOCUS...FOREVER



The use of die-cast alloy parts insures the accuracy of the focus throughout the life of the camera. Even the most severe use cannot destroy the optical alignment of the lens and range finder as both are mounted in the same rigid die casting.

All cameras are precision focused on optical collimeters so that lenses will be interchangeable. The case focal distance of the Clarus camera is 1.509."



OPENING BACK OF CAMERA



Illustration 1
Illustration shows camera CLOSED and LOCKED.



Illustration 2
Turn latch as shown as far as it will go. Do not force.



Illustration 3
Cover swings back. Camera is now ready for loading.

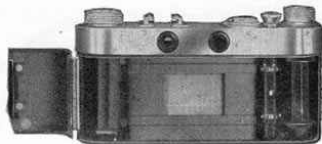
FOCAL PLANE SHUTTER

All shutter parts are precision machined.

The curtains are of rubberized Nylon coated on both sides with natural rubber to prevent pin-hole light leakage. Curtain straps eliminate any chance of breakage.

The shutter principle of intermittent action . . . insures accurate shutter speeds from 1-25th to 1-1000th second.

Shutter is cold tested—it will operate at extremely low temperatures without change of speed.



Shutter winding is accomplished as film is transported. Speeds are set after winding. Double exposure is impossible.

POSITIVE EXPOSURE COUNTER



TO SET EXPOSURE COUNTER: Grasp counter dial (A) with thumb and forefinger and turn in either direction to 0 (zero) setting.

Exposure count is obtained by a 35 to 36 gear ratio, which counts exposures as film is transported.

RANGE FINDER

CORRECT USE OF RANGE FINDER

CLARUS
CLARUS

OUT OF FOCUS

CLARUS

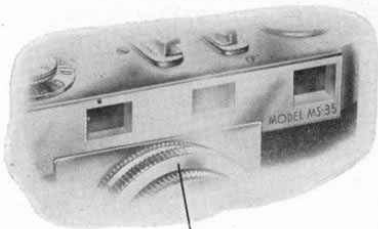
IN FOCUS

TO FOCUS LENS: Rotate mount ring (A) from infinity setting until split images appear as one.

(See Above Figure.)

The range finder is a split image type finder with an extra large aperture for ease of operation.

The range is from $3\frac{1}{2}$ feet to infinity.



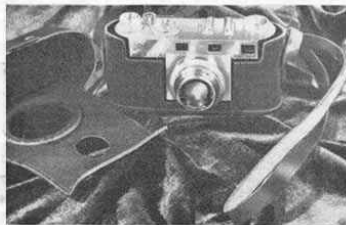
A



ADDITIONAL INTERCHANGEABLE LENSES

INFORMATION GIVEN UPON WRITTEN REQUEST

EVER-READY CARRYING CASE



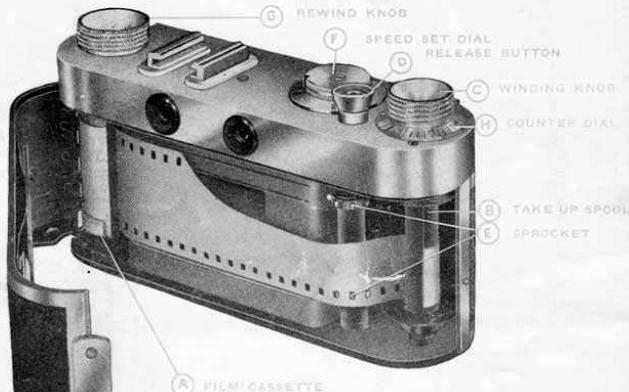
The design of the Ever-Ready type of case, permits instant use of the camera while in case.

Added protection for the camera plus convenience of operation.

ACCESSORIES

*Additional Clarus Precision-Built Accessories
Will be Available Soon.*

LOADING & OPERATING THE CLARUS CAMERA



LOADING INSTRUCTIONS: 1. Open camera back. (see instructions)
 2. Pull out rewind knob (G), insert cassette in camera as shown in (A), and engage rewind knob in cassette.
 3. Place end of film leader into slot of winding spool (B). Turn winding knob (C) until both sides of film are engaged in teeth of sprockets (E). Close back of camera. Turn Winding knob (C) until it stops. Release button (D). Repeat this process once more.

5. Set counter dial (H) to zero. The camera is now loaded and ready for operation.

OPERATING INSTRUCTIONS: Set Counter Dial (H) at Zero (0). To do this grasp the counter dial (H) alone (NOT THE WINDING KNOB (C)) with thumb and forefinger and turn in either direction to Zero (0) setting.

1. Set lens diaphragm to "f" stop opening at which picture is desired to be taken.
 2. Wind knob (C) to ready your camera.
 3. Set speed knob (F) to desired speed; speed knob is set by lifting speed knob (F) and turning while knob is in lifted position to desired speed.

4. Now to bring your picture into focus, look into rangefinder (J) and rotate mount.

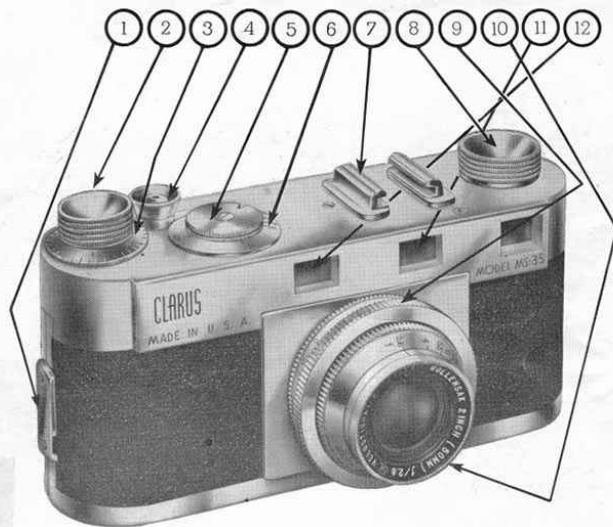
CAUTION: Do not force focusing ring at either end.
 5. To frame your picture, look back through your viewfinder (I). To snap picture, release by depressing button (D).

CAUTION: Do not restrict speed knob (F) with finger during exposure.
 6. To take your succeeding picture, go through steps 2,5 incl.

UNLOADING AND REWINDING FILM: 1. Watch counter dial (H) until thirty-six (36) has been reached or eighteen (18) in case eighteen (18) exposure roll is being used.

2. Depress Button (D) and hold same depressed and at the same time turn rewind knob (G).
 3. Listen to film being rewound until entire film is completely rewound into cassette (A).
 4. Open back of camera and remove cassette.

REMEMBER BOTH THE WINDING KNOB (C) AND REWIND KNOB (G) TURN IN A CLOCKWISE DIRECTION ONLY.



THE CLARUS CAMERA — MODEL MS-35

- | | |
|---------------------------------------|--|
| 1. Case Latch. | 7. Accessory Mount. |
| 2. Film Winding Knob. | 8. Film Rewind. |
| 3. Exposure Counter. | 9. Footage Scale. |
| 4. Shutter Release Button. | 10. Diaphragm Scale. |
| 5. Shutter Speed Knob 1-25 to 1-1000. | 11. View Finder Aperture. |
| 6. Speed Indicator Ring. | 12. Range Finder Apertures. (Outer Apertures). |

OUR AIM:—For the perfect camera. From time to time camera design changes will occur. Printed matter will feature new designs as reprintings are made. 8-1-47.

DEPTH OF FIELD *

DIAPH. Opening	RANGE OF SHARPNESS WITH LENS FOCUSED AT									
	INF.	50 FT.	30 FT.	18 FT.	10 FT.	7 FT.	6 FT.	5 FT.	4 FT.	3.5 FT.
F 1.5	111' to INF.	34.5'-90.7'	23.6'-41.'	15.5'-21.4'	9.2'-11.'	6.6'-7.5'	5.7'-6.3'	4.8'-5.2'	3.9'-4.2'	3.4'-3.6'
F 2.	83' to INF.	31.3'-124.'	22.1'-46.7'	14.8'-22.9'	8.9'-11.3'	6.5'-7.7'	5.6'-6.5'	4.7'-5.3'	3.8'-4.2'	3.4'-3.7'
F 2.8	59.8' to INF.	27.2'-307.'	20.' -60.'	13.9'-25.7'	8.6'-12.'	6.3'-7.9'	5.4'-6.8'	4.6'-5.4'	3.8'-4.3'	3.3'-3.7'
F 4.	41.7' to INF.	25.6'-INF.	17.5'-106.'	12.6'-31.5'	8.1'-13.1'	6.' -8.4'	5.3'-7.'	4.5'-5.7'	3.7'-4.4'	3.2'-3.8'
F 5.6	29.8' to INF.	18.7'-INF.	15.' -INF.	11.3'-44.9'	7.5'-15.	5.7'-9.1'	5.' -7.5'	4.3'-6.'	3.5'-4.6'	3.1'-4.'
F 8.	20.8' to INF.	14.7'-INF.	12.3'-INF.	10.' -125.'	6.8'-18.9'	5.3'-10.4'	4.7'-8.3'	4.1'-6.5'	3.4'-4.9'	3.' -4.2'
F 11.	15.2' to INF.	11.7'-INF.	10.1'-INF.	8.3'-INF.	6.1'-28.5'	4.8'-12.8'	4.3'-9.8'	3.8'-7.3'	3.2'-5.4'	2.9'-4.5'
F 16.	10.4' to INF.	8.6'-INF.	7.8'-INF.	6.6'-INF.	5.1'-152.'	4.2'-19.8'	3.8'-13.3'	3.4'-9.2'	2.9'-6.2'	2.7'-5.1'
F 22.	7.6' to INF.	6.6'-INF.	6.1'-INF.	5.6'-INF.	4.4'-INF.	3.7'-71.4'	2.9'-26.1'	2.6'-13.8'	2.3'-8.1'	2.1'-6.3'

* BASED ON A CIRCLE OF CONFUSION OF $\frac{1}{500}$