

# **Bell & Howell** **/ Canon**

World Famous 35mm  
Photographic Products



**Bell & Howell**  
7100 McCormick Rd.  
Chicago 45, Ill.

# **Bell & Howell** **/ Canon**

World Famous 35mm  
Photographic Products



**Bell & Howell**  
7100 McCormick Rd.  
Chicago 45, Ill.

### Model 7



Model 7 with F/0.95

- **Parallax Corrected "Mark" Viewfinder**  
Bright frame system permits use of 35mm, 50mm, 85mm, 100mm and 135mm lenses with the same viewfinder. Fully parallax corrected for all these lenses at any distance.
- **Universal Rangefinder**  
Convenient, accurate, double image rangefinder system sets precise focus for all Canon lenses at any distance—even at the maximum opening of the F/0.95 lens where depth of field is extremely shallow.
- **Extremely Sensitive Built-In Lightmeter**  
Coupled to shutter speed dial gives accurate, direct reading exposure for any film speed from ASA 6-400 with complete flexibility for any lens opening—shutter speed combination. High-Low sensitivity adjustment extends range of meter.
- **All Metal Focal Plane Shutter**  
Synchronized for all types of flash and flash bulbs. Equally calibrated speeds from 1 second to 1/1000 seconds plus Bulb and Time and "X" (for electronic flash). The finest quality stainless shutter is impervious to heat, cold, moisture and troublesome pinholing.
- **Complete "System" Photography**  
The Model 7 camera accepts a wide range of lenses from 25mm to 1000mm in standard thread mounts, as well as the unique bayonet mounts of the 50mm f/0.95 and the compact reflex housings MB-2. General and special function accessories equip the Model 7 for any photographic situation.

### FOUR TIMES BRIGHTER THAN THE HUMAN EYE Model 7... F/0.95 lens

In so many ways there's something "extra-special" about owning a Bell & Howell/Canon 7 camera. Equipped with an f/0.95 lens, the world's fastest, "four times brighter than the human eye," the Model 7 will adapt quickly to the most complex photographic situation. With the Model 7 you not only own a camera but a complete "system" of photography... a system that will record a baby's smile or permit extra attention to the intricacy of macrophotography. An unmatched investment in camera value and satisfaction, the Model 7 offers a host of interchangeable lenses... from 25mm to 1000mm and accessories that will mean greater value and satisfaction to its owner. Painstakingly designed to meet any photographic requirement, the Bell & Howell/Canon 7 is a camera that you'll be proud to own... proud to show... proud to use!

#### MODEL 7\*

Model 7 Camera with 50mm F/1.8	
<b>10CA</b>	<b>\$289.95</b>
Model 7 Camera with 50mm F/1.4	
<b>10CB</b>	<b>\$329.95</b>
Model 7 Camera with 50mm F/1.2	
<b>10CC</b>	<b>\$389.95</b>
Model 7 Camera with 50mm F/0.95	
<b>10CD</b>	<b>\$499.95</b>
Model 7 Camera with 35mm F/1.5	
<b>10CE</b>	<b>\$369.95</b>
Model 7 Camera with 35mm F/2.0	
<b>10CF</b>	<b>\$329.95</b>
Model 7 Camera Body Only	
<b>10C*</b>	<b>\$200.00</b>

- **Single Stroke Winding Lever**  
Rapid, "thumb-operated" winding lever, advances film, cocks shutter and advances "self-resetting" exposure counter... all in one smooth operation. Fast crank system film rewind.
- **Other Features**  
Built-in, 10 second delay, self-timer... double exposure prevention... exclusive, anti-film curl roller... cordless, direct socket for flash and electro-flash synchronization... shutter button safety lock which prevents accidental exposure... twin-safety locked back cover.

#### ORDERING INFORMATION

- Models 10CA, 10CB, 10CC and 10CF are shipped in #112001 or #112002 case (please specify).
- Model 10CD in #112001 case.
- Limited quantity available. Order subject to existing supply.
- The Model 7 camera may be ordered with any listed accessory lens. It will be billed at the difference in the cost of the lenses.

## CAMERA ACCESSORIES AND LIGHTING EQUIPMENT

### CAMERA ACCESSORIES

#### DELUXE PRESENTATION CASE

Conservative satin etched, anodized aluminum trim is added to the rich black Presentation Case to set it apart in style and quality workmanship. Padded Bouclé corduroy cradles and protects your camera and accessories. Room for camera with wide angle or normal lens attached. Precisely fitted compartments for a Wide Angle and a Telephoto Lens. Sectioned for accessory flash gun in case, several rolls of film, filters, and self storing lens hood. For Model 7.

**040375 \$39.95**

#### EVEREADY CARRYING CASE

Top grain cowhide, selected for its durability and smart, rich appearance. One snap and your camera is ready for shooting. Camera is held firmly in place by a base-mounted locking screw. With carrying strap.

For Model 7 Camera with F/0.95 Lens.

**112001 \$21.95**

#### ACCESSORY COUPLER

When using a clip-on type speedlight on the Model 7, the Accessory Coupler should be used. The Accessory Coupler, which has an accessory clip, is also used to couple the viewfinder when using 25mm lenses or other accessories with a shoe.

**112505 \$9.95**

#### LENS OPENING COVER

Included with lens and camera. Also available separately.

**112506 \$1.00**

### LIGHTING EQUIPMENT AND ACCESSORIES

#### FLASH UNIT V2

22.5V Battery—Capacitor Flash Gun. Fits directly on the camera's bayonet-type flash outlet. Full swivel head for source light use. Incorporates AG-1 Adapter. Built-in test lamp, bulb ejector, 5" folding reflector, flash calculator scale. For #5, #6 and AG-1 bulbs. With Capacitor. In Leather Case.

**112512 \$19.95**

#### EXTENSION CORD Va (15')

**112515 \$4.95**

#### EXTENSION CORD Vb (3')

**112513 \$3.75**



#### EVEREADY CARRYING CASE

Smart Compact Carrying Case reads your camera for instant shooting. Made of durable top grain cowhide, the case is tanned to a rich, lustrous finish that sets it apart in styling and appearance. Locking screw holds camera firmly in place. With carrying strap.

For Model 7 with any normal or wide angle lens except 50mm F/0.95.

**112002 \$17.95**



#### CAMERA HOLDER L

Cradles the camera firmly in a perfect horizontal or vertical plane. Bubble level for accurate positioning. Recommended when using self-timer, telephoto lenses or taking portrait pictures.

**112501 \$15.95**

#### NECK STRAP

Included with leather case. Also available separately.

**112507 \$1.95**

#### FILM MAGAZINE V

For owners who wish to load their own cassettes from bulk film stock. Holds up to 36 exposures (five feet) of film. Nickel in black finish, scratch-proof slots. In plastic case.

**112503 \$4.95**

#### LOCKING CABLE RELEASE

All-metal braided cable release for "rock-steady" exposures. Features built-in lock for long exposures.

**112502 \$2.25**

#### SIDE-LIGHTING UNIT V

Battery-Capacitor-type auxiliary flash unit. Powered by main unit battery. 5" folding reflector. With capacitor and extension cord Va.

**112511 \$21.50**

Without Extension Cord Va.

**112877 \$17.00**

#### CAPACITOR 100MFD

For Flash Unit V-2 and Side Lighting Unit V.

**112514 \$2.00**

#### AG-1 ADAPTER

For use in earlier Flash Unit V with AG-1 flash bulbs. Single plug in adapter.

**112588 \$1.25**

# WORLD FAMOUS CANON LENSES

Canon lenses are held in the highest esteem by professional and discerning amateur photographers the world over for their unsurpassed excellence, unique optical design and precision engineering. Each lens produces the highest resolution, contrast, brilliance, and color fidelity. They are SpectraCoated™ internally and externally to insure maximum color and tone balance, greater light transmission, and complete elimination of flare. Superb optical performance, coupled with reduction in weight and design refinement, has made these lenses famed throughout the world.

**WIDE ANGLE LENSES...** permit the coverage of expansive scenery, close-ups, groups and situations where there is little freedom for camera movement. The shorter focal length permits a greater depth of field resulting in increased picture realism.



25mm F/3.5

**25mm F/3.5 Lens, Built-in Lens Hood (Use 40mm Filter)**

**112003 \$185.00**

25mm Viewfinder in Case.<sup>1</sup>

**112004 \$18.95**

Leather Case for 25mm Lens.

**112005 \$5.95**

Accessory Coupler.

**112505 \$9.95**



28mm F/2.8

**28mm F/2.8 Lens, Built-in Lens Hood (Use 40mm Filter)**

**112006 \$170.00**

28mm Viewfinder in Case.<sup>1</sup>

**112007 \$15.95**

Leather Case for 28mm Lens.

**112008 \$4.95**

Accessory Coupler.

**112505 \$9.95**

**35mm\* F/2.8 Lens, Built-in Lens Hood (Use 40mm Filter)**

**112881 \$115.00**

**35mm F/2.0 Lens, Built-in Lens Hood (Use 40mm Filter)**

**112009 \$150.00**

**35mm F/1.8 Lens, Built-in Lens Hood (Use 40mm Filter)**

**112010 \$160.00**

**35mm F/1.5 Lens, Built-in Lens Hood (Use 40mm Filter)**

**112011 \$190.00**

Leather Case for 35mm F/1.8, F/2.0 or F/2.8 Lens.

**112012 \$5.95**

Leather Case for 35mm F/1.5 Lens.

**112013 \$5.95**



35mm F/1.5

Note <sup>1</sup>To use the 25mm or 28mm Viewfinder on the Model 7 the Accessory Coupler must be used.

\*Limited Supply

# WORLD FAMOUS CANON LENSES

**NORMAL FOCUS LENSES...** Multi purpose 50mm lenses are ideal for general photography such as portraiture and scenic pictures, as well as for close-ups and copying.



50mm F/0.95

**50mm F/0.95 Lens (Use 72mm Filter)**

This is the world's fastest lens... 2.2 times as fast as F/1.4. Ideally corrected for aberration, it produces corner to corner sharpness. Revolutionary lens coating assures true, natural color.

**112031 \$320.00**



50mm F/1.2

**50mm F/1.2 Lens (Use 55mm Filter)**

**112030 \$210.00**



50mm F/1.4

**50mm F/1.4 Lens (Use 48mm Filter)**

**112029 \$150.00**

**50mm F/1.8 Lens (Use 40mm Filter)**

**112028 \$110.00**

Leather Case for 50mm F/1.8 and F/1.4 Lens.

**112032 \$5.95**

Leather Case for 50mm F/1.2 Lens.

**112033 \$5.95**

Leather Case for 50mm F/0.95.

**112034 \$9.95**

**LONG FOCUS LENS...** Produces the natural perspective that is so perfect for portraiture. Highly suited as well for news pictures, sports events, commercial photography and for stage show pictures.



85mm F/1.8

**85mm F/1.8 Lens (Use 58mm Filter)**

**112035 \$170.00**

Leather Case for 85mm F/1.8 Lens.

**112036 \$6.95**

**TELEPHOTO LENSES...** Ideally suited for vivid shots of distant scenes and hard to reach subjects. Perfect for sporting events. The natural perspective, even at short ranges make them suitable for general photography and portraiture.



100mm F/2.0

**100mm F/3.5 Lens (Use 40mm Filter)**

**112014 \$100.00**

**100mm F/2.0 Lens (Use 58mm Filter)**

**112015 \$170.00**

**135mm F/3.5 Lens (Use 48mm Filter)**

**112018 \$130.00**

Leather Case for 100mm F/3.5 Lens.

**112016 \$6.95**

Leather Case for 100mm F/2.0 Lens.

**112017 \$6.95**

Leather Case for 135mm F/3.5 Lens.

**112019 \$6.95**

# WORLD FAMOUS CANON LENSES

**TELEPHOTO AND LONG TELEPHOTO M LENSES...** Include the M 135mm F/2.5 and M200mm F/3.5. These telephoto and long telephoto pre-set type lenses are designed to be used exclusively in combination with the new extremely compact Reflex Housing MB-2 on the Model 7 camera. They both have Canonflex-type bayonet mounts, aperture click stops down to f/22, and magenta coating.



M135mm F/2.5



M200mm F/3.5

## \* M 135mm F/2.5 Set for Model 7 (Use 58mm Filter)

**112020**

**\$190.00**

M135 Lens Set consists of following items. Available separately upon request.

M 135mm F/2.5 lens  
112021

Lens Hood T-60  
Leather Carrying Case  
112520  
112024

## \* M 200mm F/3.5 Set for Model 7 (Use 58mm Filter)

**112025**

**\$210.00**

M200 Lens Set consists of the following items. Available separately upon request.

M 200mm F/3.5 Lens  
112026

Lens Hood T-60  
Leather Carrying Case  
112520  
112027

## Reflex Housing MB-2 (Mirror Box 2)

Compact Reflex Housing for use with Model 7 and both M-Series lenses.

**112022**

**\$115.00**

\*A complete set should also include the MB-2 Reflex Housing which is interchangeable between both sets.

**LONG TELEPHOTO LENSES...** Extremely powerful in magnification and dramatic in telephoto effect. Best suited for photographing close-ups of wildlife and the vivid details of distant small subjects. Features the new compact Reflex Housing MB-2 with ground glass focusing.



400mm F/4.5



600mm F/5.6

## † 400mm F/4.5 Set for Model 7 (Use 48mm Filter)

**112040**

**\$471.00**

400mm Lens Set consists of the following items. Available separately upon request.

400mm F/4.5 Model 2 Lens With Lens Hood.  
112041

Intermediate Tube

**112043**

Carrying Case

**112045**

## † 600mm F/5.6 Set for Model 7 (Use 48mm Filter)

**112060**

**\$550.00**

600mm Lens Set consists of the following items. Available separately upon request.

600mm F/5.6 Lens with Lens Hood.

**112061**

Intermediate Tube

**112062**

Carrying Case

**112063**

\*A complete set for the long telephoto lenses should include the Reflex Housing MB-2, Lens Supporter and Bellows R which are all interchangeable among sets.

# WORLD FAMOUS CANON LENSES

## † 800mm F/8 Set for Model 7 (Use 48mm Filter)

**112080**

**\$650.00**



800mm Lens Set consists of the following items. Available separately upon request.

800mm F/8 Model 2 Lens with Lens Hood. **112081**

Intermediate Tube **112062** Carrying Case **112082**

## † 1000mm F/11 Set for Model 7 (Use 48mm Filter)

**112090**

**\$750.00**



1000mm Lens Set consists of the following items. Available separately upon request.

1000mm F/11 Lens with Lens Hood. **112091**

Intermediate Tube **112092** Carrying Case **112093**

Accessories for use with Long and Extra-Long Telephoto Lenses

Bellows R

**112044**

**\$50.00**

Lens Supporter

**112042**

**\$49.00**

Reflex Housing MB-2

**112022**

**\$115.00**

\*A complete set for the long telephoto lenses should include the Reflex Housing MB-2, Lens Supporter and Bellows R which are all interchangeable among sets.

## CANON LENS SPECIFICATIONS

Type	Angle of View	Magnification	No. of Elements	Net Weight		Barrel	Att'ment Size Series	Aperture (f stops)		Focusing Range		Coating
				(oz.)	(gr.)			down to	in feet	in meters		
Wide-Angle												
25mm F3.5	82°	0.5×	5	5	145	Brass	40mm VII	22	3.5-50	1-20	Purple	
28mm F2.8	75°	0.56×	6	5.6	160	Brass	40mm VII	22	3.5-50	1-20	Magenta	
35mm F1.5	64°	0.7×	8	6.5	185	Light Alloy	48mm VII	22	3.5-50	1-20	Amber	
35mm F1.8	64°	0.7×	7	4.4	125	Light Alloy	40mm VII	22	3.5-50	1-20	Amber	
35mm F2.8	64°	0.7×	5	4.4	125	Light Alloy	40mm VII	22	3.5-50	1-20	Purple	
Normal-Focus												
*50mm F0.95	46°	1.0×	7	—	—	—	—	16	3.5-50*	1-20*	—	
50mm F1.2	46°	1.0×	7	11.4	322	Light Alloy	55mm	22	3.5-50	1-20	Amber	
50mm F1.4	46°	1.0×	6	8.6	246	Light Alloy	48mm VII	22	3.5-50	1-20	Amber	
50mm F1.8	46°	1.0×	6	9.5	270	Light Alloy	40mm VI	22	3.5-50	1-20	Amber	
Long-Focus												
85mm F1.8	29°	1.7×	5	24	680	Light Alloy	58mm	22	3.5-60	1-20	Magenta	
Telephoto												
100mm F2	24°	2.0×	6	18.3	515	Light Alloy	58mm	22	3.5-100	1-30	Amber	
100mm F3.5	24°	2.0×	5	7.7	220	Light Alloy	40mm VII	22	3.5-100	1-30	Purple	
135mm F3.5	18°	2.7×	4	15.5	438	Light Alloy	48mm VII	22	5-200	1.5-60	Magenta	
**M135mm F2.5	18°	2.7×	6	—	—	—	—	22	5-100**	1.5-30*	—	
Long-Telephoto												
**M200mm F3.5	12°	4.0×	7	—	—	—	—	22	8-150**	2.5-50*	—	
200mm F3.5	12°	4.0×	7	32	850	Light Alloy	58mm	22	10-300	3-100	Purple	
Extra-Long-Telephoto												
400mm F4.5	6°	8.0×	5	8.8 lbs.	3 kg	Light Alloy	Special	22	26-1000	8-200	Magenta	
600mm F5.6	3.3°	12.0×	2	4.0 lbs.	1.8 kg	Light Alloy	Special	32	17-∞	5-∞	Purple	
800mm F8	2.5°	16.0×	2	4.2 lbs.	1.9 kg	Light Alloy	Special	32	30-∞	9-∞	Purple	
1000mm F11	2°	20.0×	2	4.0 lbs.	1.8 kg	Light Alloy	Special	32	90-∞	27-∞	Purple	

\* Special bayonet-mount M-type lens used for the Model 7 only.

\*\* Bayonet-mount lens used in combination with Mirror Box 2.



**LENS ACCESSORIES**

LENS	Filter Size	Lens Hood	Lens Cap <sup>1</sup>	Dust Cap <sup>1</sup>	Auto-Up <sup>1</sup> with Case
25mm F/3.5	40mm	Built-in	112523 \$ .75	112528 \$ 1.20	—
28mm F/2.8	40mm	Built-in	112523 \$ .75	112529 \$ 1.20	—
35mm F/1.5	48mm	Built-in	112524 \$ .75	112530 \$ .75	—
35mm F/1.8	40mm	Built-in	112523 \$ .75	112530 \$ .75	—
35mm F/2.8	40mm	Built-in	112523 \$ .75	112530 \$ .75	—
50mm F/0.95	72mm	112522 \$ 9.95	112527 \$ 2.50	112532 \$ 1.95	—
50mm F/1.2	55mm	112521 \$ 7.95	112525 \$ 1.00	112530 \$ .75	57mm
50mm F/1.4	48mm	112517 \$ 6.50	112524 \$ .75	112530 \$ .75	50mm
50mm F/1.8	40mm	112516 \$ 5.95	112523 \$ .75	112530 \$ .75	42mm
85mm F/1.8	58mm	112520 \$13.50	112526 \$ 1.00	112530 \$ .75	—
100mm F/2	58mm	112520 \$13.50	112526 \$ 1.00	112530 \$ .75	—
100mm F/3.5	40mm	112518 \$ 4.95	112523 \$ .75	112530 \$ .75	—
135mm F/3.5	48mm	112519 \$ 4.50	112524 \$ .75	112530 \$ .75	—
M-135mm F/2.5	58mm	112520 \$13.50	112526 \$ 1.00	112531 \$ 1.95	—
M-200mm F/3.5	58mm	112520 \$13.50	112526 \$ 1.00	112531 \$ 1.95	—
400mm F/4.5	48mm	Built-in	100mm <sup>3</sup>	Special Order	—
600mm F/5.6	48mm	Built-in	118mm <sup>3</sup>	Special Order	—
800mm F/8	48mm	Built-in	112mm <sup>3</sup>	Special Order	—
1000mm F/11	48mm	Built-in	100mm <sup>3</sup>	Special Order	—

Notes: <sup>1</sup>Supplied with lens. Also available separately.

<sup>2</sup>In Leather Case.

<sup>3</sup>Special Order.

**AUTO-UPS . . .** Supplementary close-up lenses. Permit accurate focusing through the camera rangefinder. Use Parallax Compensator III with 50mm accessory. Viewfinders for accurate composition. When using the camera body viewfinder the parallax compensation is not necessary.

**Auto-Ups for Model 7**

	Shooting Distance	Range of Object
For 50mm lenses	Auto-Up 450 No. 1 Auto-Up 900 No. 2	55-100 cm 31x21-63x42 cm 39-52 cm 21x14-31x21 cm

**AUTO-UP 450 (No. 1)**

42mm with case	<b>112071</b>	<b>\$24.75</b>
50mm with case	<b>112073</b>	<b>\$34.75</b>
57mm with case	<b>112075</b>	<b>\$37.50</b>

**Auto-Up No. 1 Auto-Up No. 2**

For	Canon 50mm Lens	Canon 50mm Lens
Max. & Min. distance between film & object	3' 2 3/4" ~ 1' 9 3/8" 984mm ~ 539mm	1' 8 5/8" ~ 1' 3 1/8" 523mm ~ 378mm
Area covered at above distance	2' 3/4" x 1' 4 1/4" ~ 1' 3/8" x 8 1/2" 730mm x 420mm ~ 310mm x 207mm	1' 3/8" x 8 1/4" ~ 8 1/4" x 5 1/2" 315mm x 210mm ~ 204mm x 136mm

**AUTO-UP 900 (No. 2)**

42mm with case	<b>112070</b>	<b>\$24.75</b>
50mm with case	<b>112072</b>	<b>\$34.75</b>
57mm with case	<b>112074</b>	<b>\$37.50</b>
Parallax Compensator III	<b>112089</b>	<b>\$ 9.95</b>

**VERSATILE SCREW-IN FILTERS . . .**

. . . are made of specially selected optical glass, polished flat, and color balanced to optimum color specifications. They are free from strain and unaffected by light or moisture. All filters are made under rigid quality control to insure the maximum performance of the Canon lenses. With plastic case.

Type	Exposure Factor	Uses and Effects FOR BLACK AND WHITE FILM	40mm \$5.50	48mm \$6.95	55mm \$9.25	58mm \$12.50	72mm \$18.95
UV	1X	Absorbs only ultraviolet ray, suited for mountain, snow, sea, and distant scenes. Also useful for outdoor color film.	112545	112555	112565	112575	112585
Y1	1.5X	Absorbs ultraviolet and some blueviolet rays, suited for general photography; renders red and yellow subjects lighter than the eye sees them; darkens the sky to bring out clouds, and emphasizes contrast in sea scenes.	112540	112550	112560	112570	N/A
Y3	2X	Has the same effects as the Y1, but emphasizes it.	112541	112551	112561	112571	112581
G1	3X	Passes green light most freely; darkens yellow, blue, orange, and red subjects.	112543	112553	112563	112573	N/A
O1	3X	Absorbs ultraviolet, blue, and some green lights. Renders blue subjects considerably darker . . . yellow and red subjects lighter . . . than the eye sees them. Most effective for distant landscape.	112542	112552	112562	112572	N/A
R1	6X	For panchromatic and infra-red films. Turns blue subjects darker, and red and green subjects lighter. Gives moonlight effect on daylight landscape scenes.	112544	112554	112564	112574	112584
<b>FOR COLOR FILM</b>							
1A Skylight		For all daylight color film. For distant snow or mountain scenes on overcast days and for open shade under a clear sky to reduce excessive blue.	112319	112334	112349	112364	112416
80C		Use with daylight Kodachrome, Anscochrome and Ektachrome for flash bulb (except SM & SF) photography. Also gives cooler colors for early morning and late afternoon pictures and where fill in flash is used.	112323	112338	112353	112368	112418
80B		Use with the same daylight color films as above indoors with photofloods.	112320	112335	112350	112365	N/A
81A		Use with the same daylight type color films as above indoors with electronic flash.	112321	112336	112351	112366	112419
82A		Use with the same daylight type color films as above and with Kodacolor, Ektacolor, Agfacolor CN 14 and CN 17 in early morning and late afternoon.	112322	112337	112352	112367	112420
85		Use with indoor films (Type A) in daylight. Also use with Kodacolor as correction filter for electronic flash.	112316	112331	112346	112361	112415
85B		For use with indoor films (Type B) such as Ektachrome B, High Speed Ektachrome B, and Super Anscochrome Tungsten in daylight.	112317	112332	112347	112362	112417
85C		Use with indoor films (Type F), Kodachrome F and Ektachrome F in daylight.	112318	112333	112348	112363	N/A

# REPRODUCING APPARATUS AND ACCESSORIES

Because 35mm film is inexpensive and can be easily handled and stored, its use in copying has increased greatly. The Canon Copying Apparatus is designed to adapt the Bell & Howell/Canon Lens and Camera, whose reputation as top-class precision instruments have been established the world over, to close-up work, so that 35mm film may be used in copy work easily, rapidly and accurately.

**Copy Stand 3 for 50mm F/1.8 lens.** Complete set with supplementary lenses.

**112533 \$160.00**

**Copy Stand 3 for 50mm F/1.4 lens.** Complete set with supplementary lenses.

**112534 \$165.00**



Copy Stand 3

Note—Each Complete Set consists of the following:

**STANCHION:** Upright post attached to base board on which copying apparatus is mounted.

**CARRYING ARM:** Sliding arm, mounts camera to Stanchion. Can be mounted in either upward or downward position depending upon magnification desired.

**PANTA CLOSE FOCUSING SLIDE:** Key part of entire apparatus. Permits interchanging of ground glass and camera lens for precise focusing. Can also be used on tripod.

**FOCUSING MOUNT:** Used between the lens and camera mount for focusing.

**SUPPLEMENTARY LENS (NO. 1 & 2):** Attach to camera lens depending on magnification desired.

**METAL SCALE:** Used to determine distance of subject to film plane.

**VINYL COVER:** Protects apparatus from dust when left in an assembled position.

**CASE:** For storage of apparatus when disassembled.

**BASE BOARD:** Made specially flat for precise copy work.

**EXTENSION RING (A, B, C):** Used to expand the object area when the focusing mount is not sufficient. A = 6mm, B = 9mm, C = 12mm. Used alone or together.

**RIGHT ANGLE FOCUSING GLASS:** Three power magnification. Placed on top of the focusing glass. Convenient when the focusing glass is at eye level.

**Direct View Focusing Glass**

Ten power magnification focusing glass. Extremely useful for precise focusing.

**112535 \$12.50**

**Supplementary Lenses 40mm for 50mm F/1.8 Lens**

(Set of No. 1 and 2)  
**112536 \$17.50**

**Supplementary Lenses 48mm for 50mm F/1.4 Lens**

(Set of No. 1 and 2)  
**112537 \$19.95**

**Focusing Mount for 50mm F/1.8 and F/1.4**

**112538 \$ 7.95**

## COPYING SPECIFICATIONS

Camera Body	All Bell & Howell/Canon Cameras (Except Canonet)
Lens	50mm F/1.8 or F/1.4
Film Size	24mm x 36mm
Ratio of Reduction	Without Supplementary Lens 1/1-1/7 With Supplementary Lens 1/7.5-1/22
Area Covered	528mm x 792mm-24mm x 36mm
Object to Film Distance	1330mm-206mm

# MACROPHOTOGRAPHY ACCESSORIES

With Macrophoto extension tubes, the Copy Stand 3 can be used to photograph extremely small subjects. By using these tubes individually, or in combination, a sharp magnified image of approximately 1½ to 6½ times the size of the original subject can be recorded on film.



Couplers and Extension Tubes

## MACROPHOTO COUPLERS

Used to couple lens to Macrophoto Extension Tubes.

**55mm (for 50mm F/1.2) 112595 \$3.95**

**48mm (for 50mm F/1.4) 112596 \$3.95**

**40mm (for 50mm F/1.8) 112597 \$3.30**

## MACROPHOTO EXTENSION TUBES

**25mm 112589 \$ 3.50**

**50mm 112590 \$ 4.50**

**75mm 112591 \$ 5.95**

**100mm 112592 \$ 7.50**

**150mm 112593 \$ 9.95**

**200mm 112594 \$12.50**

Pictured at left

TABLE FOR MACROPHOTO EXTENSION TUBES

Total Tube Length (mm)	Photography Magnification (approx.)	Object-Measuring Line Distance (mm, approx.)	Area (approx.)	Exposure Magnification
25	1	160	24 x 36	4
50	1.5	165	16 x 24	6
75	2.0	180	12 x 18	9
100	2.5	195	9.6 x 14.4	12
125	3.0	215	8 x 12	16
150	3.5	240	6.8 x 10.3	20
175	4.0	270	6 x 9	25
200	4.5	290	5.3 x 8	30
225	5.0	310	4.8 x 7.2	36
250	5.5	330	4.4 x 6.5	42
275	6.0	360	4 x 6	49
300	6.5	390	3.7 x 5.5	56

## MACROPHOTO STRUT

For use with extension tube combinations in excess of 75mm. This is necessary to hold the lens in correct relationship with the subject with long extension tubes to prevent distortion and improper focus.

**112598 \$5.95**

Strut



Unit CM-IIA

## PHOTOMICROGRAPHIC UNIT, MODEL CM-IIA

Photograph any microscopic image with the standard Bell & Howell/Canon Camera body. The Photomicrographic Unit couples to the tube of any standard microscope to permit recording the full subject. Five power Focusing Eyepiece allows full viewing of the subject during exposure. The image recorded will cover the entire film size (24mm x 36mm) and is ½x of the magnified microscope image. The Hood has between-the-lens shutter with speed of 1/200, 1/100, 1/50, 1/25, 1/10, 1/5, 1/2, 1 second, T and B and the X terminal. Reflex housing permits focusing and observation of microscope image during period of exposure.

Unit is supplied with Hood, Reflex Housing, Focusing Eyepiece, Coupler for Microscope's ocular tube (Coupler to ocular tube with outside diameter from 24.7 to 25.2mm). Plastic dust Cap and Cable Release V.

**112559 \$104.95**

## 6 X 6 PHOTOMICROGRAPHIC CAMERA MODEL II

For photographing the microscope image up to 2¼" x 2¼" on 3¼" x 3¼" cut film. This camera is used with the Photomicrographic Unit Model CM-IIA in place of the standard Bell & Howell/Canon Camera Body. The Model II Camera has a between-the-lens shutter with speeds of 1/200, 1/100, 1/50, 1/25, 1/10, 1/5, 1/2, 1 second, plus T and B. It is fitted in place of the Hood of the Model CM-IIA Unit.

**112579 \$67.00**

## PHOTOMICROGRAPHIC UNIT HOLDER

For stabilizing the position of the photomicrographic attachment when it is used on the Copying Stand because of the microscope's mechanical construction.

**112569 \$6.50**

## PHOTOMICROGRAPHIC HOOD

**112549 \$7.50**

## Canonflex RM



Model RM

### Precision . . . Performance . . .

Never before . . . has a 35mm Camera been made to such precise, such exacting standards of manufacture and performance as the new Canonflex RM of Bell & Howell/Canon. A Single-Lens-Reflex Camera that combines the advantages, the compactness, the accuracy of a rangefinder camera while incorporating all the flexibility . . . all the versatility of a Single-Lens-Reflex. The Bell & Howell/Canon Canonflex RM incorporates all the precision features that have made the name pre-eminent in the world of photography. The new RM excels in optical as well as mechanical perfection . . . making it the ultimate in the high quality, high performance, Single-Lens-Reflex Cameras.

With the Model RM you have at your disposal an entire "System" of Photography. A system recognized the world over for its precision, its flexibility and its performance.

The Super Canonmatic System is also yours as an integral part of the Model RM. Truly outstanding, the Super Canonmatic System lets you view and focus with full brightness at all times.

In design . . . in manufacture . . . in performance . . . the Canonflex RM by Bell & Howell/Canon is truly the most outstanding 35mm camera today.

#### • Single Lens Reflex

An improved compact eye-level reflex system that shows the exact picture coverage in full brightness without inverting the image either vertically or horizontally.

#### • Built-In, Coupled Light Meter

A highly sensitive light meter with film speeds from ASA 10 to 800 is coupled to the shutter speed dial to give accurate direct reading aperture settings for any shutter speed-aperture combination.

#### • Single Pivot Focal Balance Shutter

Single dial sets equally calibrated scales from 1 to 1/1000 sec. or B. Fully synchronized at various speeds for any type of flash bulb and electronic flash.

#### • Super-Canonmatic System

Bright viewfinder image at all times. Built into the optical system, the Super-Canonmatic System allows you to pre-set the diaphragm to any aperture setting without dimming the viewfinder. When the shutter button is pressed, the diaphragm and mirror are actuated and return to original position all in a fraction of a second.

#### CANONFLEX RM

Model RM Reflex Camera with 50mm f/1.8 Super Canonmatic Lens.

**20CA \$299.95**

Model RM Reflex Camera with 58mm f/1.2 Super Canonmatic Lens.

**20CC \$425.00**

Model RM Reflex Camera with 35mm f/2.5 Super Canonmatic Lens.

**20CE \$345.00**

Model RM Reflex Camera—Body Only.

**20C \$185.00**

#### • Built-In Range Viewfinder

Split image rangefinder for precise needle-sharp focusing. Ground glass viewing also shows you the exact sharpness and depth of field when the manual diaphragm is stopped down to the desired setting.

#### • Other Convenient Quality Features

Single stroke winding lever . . . rapid crank rewind . . . double exposure prevention . . . self resetting exposure counter . . . complete "system" photography.

#### — ORDERING INFORMATION —

- Model 20CA and 20CE are shipped in 112603 or 112604 case. Please specify.
- Model 20CC is shipped in 112604 case.
- Limited quantity available. Order subject to existing supply.
- The Model RM Reflex Camera may be ordered with any listed accessory lens. It will be billed at the difference in the cost of the lens.

## CAMERA ACCESSORIES AND LIGHTING EQUIPMENT

### CAMERA ACCESSORIES

#### DELUXE PRESENTATION CASE

Conservative satin-etched, anodized aluminum trim is added to the rich black Presentation Case to set it apart in style and quality workmanship. The padded exterior and rich, padded Boucle Corduroy interior cradles your equipment against accidental bumps. Room for Camera with wide angle or normal lens attached. Precisely fitted compartments for accessory wide angle and telephoto lenses. Sectioned for accessory flash gun in case, several rolls of film, filters and self storing lens hoods. For Canonflex RM.

**040376**

**\$39.95**

#### EVERREADY CARRYING CASE

Beautiful tanned leather everready carrying case for the Canonflex RM. Readies your camera for instant shooting. One snap and you're ready to take pictures. Locking screw holds the camera firmly in place. With neck strap.

For RM with 58mm f/1.2 Lens

**112604**

**\$17.95**

For RM with all other normal and wide angle lenses

**112603**

**\$16.95**



#### WAIST LEVEL VIEWER

Attaches to the Canonflex RM. Convenient, 360° rotation with 90° internal check stop for low angle photography copy work, etc. and essential for precision close-up photography with Bellows R.

**112629**

**\$21.95**

#### CAMERA HOLDER R-3

Cradles the camera firmly in a perfect horizontal or vertical plane. Convenient for using telephoto lenses on a tripod and essential for use with the copy stand. In leather case.

**112626**

**\$14.95**

#### LOCKING CABLE RELEASE

All-metal, cable release for steady exposures. Features built-in lock for long exposures.

**112502**

**\$2.25**

#### FILM MAGAZINE V

For owners who wish to load their own cassettes from bulk film. Holds up to 36 exposures (five feet) of film. Nickel in black finish, scratch-proof slots. In plastic case.

**112503**

**\$4.95**

#### NECK STRAP

Sheep-skin neck strap. Included with camera or Leather Case, also available separately.

**112607**

**\$1.50**

#### LENS OPENING COVER R

**112663**

**\$ .50**

#### LENS MOUNT CONVERTER E

Permits use of an Exacta mount Lens on Canonflex.

**112125**

**\$7.95**

#### LENS MOUNT CONVERTER A

Permit use of Canon and Leica type screw mount lenses with Canonflex. Primarily for close-up work. Lens will not focus at infinity.

**112135**

**\$11.50**

#### LENS MOUNT CONVERTER B

Permit use of Canonflex lenses with screw mount Canon cameras or close-up screw mount accessories.

**112693**

**\$6.50**

## FLASH UNITS AND ACCESSORIES

#### FLASH UNIT MODEL V2

22-5V Battery Capacitor Flash Gun. Full swivel head for bounce light use. Built-in test lamp, bulb ejector. 5" folding reflector and flash calculator scale. Incorporates AG-1 Adaptor. For #5, 6, and AG-1 bulbs. With 100 uf capacitor. In Leather Case.

**112512**

**\$18.95**

#### SIDE-LIGHTING UNIT V

Battery Capacitor type auxiliary flash unit. Powered by main unit battery. 5" folding reflector. With capacitor and extension cord Va.

**112511**

**\$21.50**

#### WITHOUT EXTENSION CORD VA

**112877**

**\$17.00**

#### EXTENSION CORD VA (15')

**112515**

**\$4.95**

#### EXTENSION CORD VB (3')

**112513**

**\$3.75**

#### CAPACITOR 100MFD

For Flash Unit V2 and Side Lighting Unit V.

**112514**

**\$2.00**

#### FLASH SHOT COUPLER

Accessory shoe for using clip-on type speedlights on Canonflex RM.

**112634**

**\$8.95**



## WORLD FAMOUS CANON LENSES

Canon lenses are held in the highest esteem by professional and discerning amateur photographers the world over for their unsurpassed excellence, unique optical design and precision engineering. Each lens produces the highest resolution, contrast, brilliance, and color fidelity. They are SpectraCoated™ both internally and externally to insure maximum color and tone balance, greater light transmission, and complete elimination of flare. Superb optical performance, coupled with reduction in weight and design refinement has made these lenses famed throughout the world.

### WIDE ANGLE LENSES

... permit the coverage of expansive scenery, close-ups, groups and situations where there is little freedom for camera movement. The shorter focal length permits a greater depth of field resulting in increased picture realism.

### NORMAL FOCUS LENSES

... are multi purpose lenses ideal for general photography such as portraiture and scenic pictures, as well as for close-ups and copying.

### SUPER CANOMATIC LENSES

Super Canomatic lenses have a fully automatic spring back diaphragm. As the shutter is released, the diaphragm closes down to a pre-selected aperture stop and springs back to full aperture viewing automatically after exposure. Two rings; one sets the pre-selected aperture for automatic operation, the other visual ring sets independently to obtain depth of field.

#### WIDE ANGLE LENSES

**35mm F/2.5R Super-Canomatic Lens.** (Use 58mm Filter)

**112103**

**\$160.00**

Leather Case for 35mm F/2.5R.

**112104**

**\$ 4.95**

#### NORMAL FOCUS LENSES

**58mm F/1.2R Super-Canomatic Lens.** (Use 58mm Filter)

**112107**

**\$255.00**

Leather Case for 58mm F/1.2R.

**112108**

**\$ 5.95**

**50mm F/1.8R Super-Canomatic Lens.** (Use 58mm Filter)

**112105**

**\$130.00**

Leather Case for 50mm F/1.8R.

**112106**

**\$ 4.95**

#### TELEPHOTO LENSES

**85mm F/1.8R Super-Canomatic Lens.** (Use 58mm Filter)

**112109**

**\$183.05**

Leather Case for 85mm F/1.8R.

**112110**

**\$ 6.95**

**100mm F/2.0R Super-Canomatic Lens.** (Use 58mm Filter)

**112111**

**\$193.05**

Leather Case for 100mm F/2.0R.

**112112**

**\$ 6.95**

**135mm F/2.5R Super-Canomatic Lens.** (Use 58mm Filter)

**112113**

**\$193.05**

Leather Case for 135mm F/2.5R.

**112114**

**\$ 6.95**

### CANOMATIC LENS

The Canomatic lens has an automatic mechanism which works the same as the Super-Canomatic except that the diaphragm does not return to full aperture again unless the charge ring is manually returned to full aperture. By pressing the pre-set release button by the lens mount ring, the depth of field can be viewed.

**200mm F/3.5R Canomatic Lens with Lens Hood and Case.** (Use 58mm Filter)

**112115**

**\$220.00**

## WORLD FAMOUS CANON LENSES

### CANON LENS R (Pre-Set)

Two rings; one is the pre-set ring, the other is the F stop setting ring which enables the photographer to quickly set the aperture after focusing at full brightness.

**100mm F/3.5R Lens.** (Use 40mm Filter)

**112116**

**\$ 90.50**

Leather Case for 100mm F/3.5.

**112117**

**\$ 7.00**

**135mm F/3.5R Lens.** (Use 48mm Filter)

**112118**

**\$132.95**

Leather Case for 135mm F/3.5R.

**112119**

**\$ 7.00**

### CANON LENS R (Manual F Stop Control)

These lenses have a single diaphragm setting ring without automatic operation.

#### LONG TELEPHOTO LENSES

**300mm F/4.0R Lens Set.** (Use 48mm Filter)

**112130**

**\$321.00**

300mm F/4.0R Lens Set consists of the following items. Available separately upon request.

**300mm F/4.0R Lens with Lens Hood.**

**112131**

Intermediate Tube

**112043**

Leather Carrying Case

**112132**

**400mm F/4.5R Lens Set.** (Use 48mm Filter)

**112140**

**\$471.00**

400mm F/4.5R Lens Set consists of the following items. Available separately upon request.

**400mm F/4.5R Lens with Lens Hood.**

**112041**

Intermediate Tube

**112043**

Leather Carrying Case

**112142**

**600mm F/5.6R Lens Set.** (Use 48mm Filter)

**112160**

**\$550.00**

600mm F/5.6R Lens Set consists of the following items. Available separately upon request.

**600mm F/5.6R Lens with Lens Hood.**

**112061**

Intermediate Tube

**112062**

Metal Carrying Case

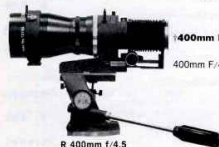
**112163**



R 100mm f/3.5



R 300mm f/4.0



R 400mm f/4.5



R 600mm f/5.6

† A complete set for the long telephoto lenses should consist of the Bellows R and Lens Supporter which are interchangeable among sets.



35mm F/2.5R



50mm F/1.8R



135mm F/2.5R



200mm F/3.5R



**WORLD FAMOUS CANON LENSES**



**800mm F/8R Lens Set (Use 48mm Filter)  
112180 \$650.00**

800mm F/8R Lens Set consists of the following items.  
Available separately upon request.

800mm F/8R Lens with Lens Hood.  
112081  
Intermediate Tube  
112082  
Metal Carrying Case  
112182

R 800mm f/8

**1000mm F/11R Lens Set (Use 48mm Filter)  
112190 \$750.00**

1000mm F/11R Lens Set consists of the following items.  
Available separately upon request.

1000mm F/11R Lens with Lens Hood.  
112091  
Intermediate Tube  
112092  
Metal Carrying Case  
112193

Accessories for use with Long and Extra-Long Telephoto Lenses.

Belows R  
112044 \$ 50.00  
Lens Supporter  
112042 \$ 49.00

† A complete set for the long telephoto lenses should consist of the Belows R and Lens Supporter which are interchangeable among sets.

**SPECIFICATIONS FOR CANONFLEX LENSES**

Type	Angle of View	Magnification	Number of Elements	Net Weight (oz.)	(gm.)	Aperture (f Stops) Click Stops down to	Attachment Size Series	Focusing Range		Coating
								in Feet	in Meters	
Wide-Angle Super Canonmatic Lens R 35mm F2.5	64°	0.7X	7	9	322	16	58 mm	1.5~10~∞	0.4~ 5~∞	Magenta
Normal-Focus Super Canonmatic Lens R 50mm F1.8	46°	1.0X	6	11	305	16	58 mm	2 ~50~∞	0.6~15~∞	Amber
Long-Focus Super Canonmatic Lens R 85mm F1.8	29°	1.7X	5	1.0 lbs.	470	16	58 mm	3.5~60~∞	1 ~20~∞	Magenta
Telephoto Super Canonmatic Lens R 100mm F2 & R 135mm F2.5	24° 18°	2.0X 2.7X	6 6	1.1 lbs. 1.4 lbs.	515 630	16 16	58 mm 58 mm	3.5~60~∞ 5~100~∞	1 ~20~∞ 1.5~30~∞	Amber Magenta
Canon Lens R (Pre Set) 100mm F3.5 135mm F3.5	24° 18°	2.0X 2.7X	5 4	6.5 15	184 438	22 22	40 mm 48 mm	3.5~100~∞ 5~100~∞	1.5~30~∞ 1.5~30~∞	Purple Magenta
Long-Telephoto Canonmatic Lens R 200mm F3.5	12°	4.0X	7	1.5 lbs.	670	22	58 mm	8~150~∞	2.5~50~∞	Magenta
Extra-Long-Telephoto R 300mm F4 R 400mm F4.5 R 600mm F5.6 R 800mm F8 R1000mm F11	8° 6° 4° 3° 2.4°	6.0X 8.0X 12.0X 16.0X 20.0X	5 5 2 2 2	2.6 lbs. 3.3 lbs. 4 lbs. 4.2 lbs. 4 lbs.	1180 1500 1830 1920 1830	22 22 32 32 32	Special Special Special Special Special	No Distance Scale No Distance Scale No Distance Scale No Distance Scale No Distance Scale	Magenta Magenta Purple Purple Purple	

Note: The weight of lenses over 200 mm is of net weight (lens alone) and does not include lens supporter, intermediate tube, and belows R.

**VERSATILE SCREW-IN FILTERS...**

... are made of specially selected optical glass, polished flat, and color balanced to optimum color specifications. They are free from strain and unaffected by light or moisture. All filters are made under rigid quality control to insure the maximum performance of the Canon lenses. With plastic case.

Type	Exposure Factor	Uses and Effects FOR BLACK AND WHITE FILM	40mm \$5.50	48mm \$6.95	58mm \$12.50
UV	1X	Absorbs only ultraviolet ray, suited for mountain, snow, sea, and distant scenes. Also useful for outdoor color film.	112545	112555	112575
Y1	1.5X	Absorbs ultraviolet and some blueviolet rays, suited for general photography; renders red and yellow subjects lighter than the eye sees them; darkens the sky to bring out clouds, and emphasizes contrast in sea scenes.	112540	112550	112570
Y3	2X	Has the same effects as the Y1, but emphasizes it.	112541	112551	112571
G1	3X	Passes green light most freely; darkens yellow, blue, orange, and red subjects.	112543	112553	112573
O1	3X	Absorbs ultraviolet, blue, and some green lights. Renders blue subjects considerably darker... yellow and red subjects lighter... than the eye sees them. Most effective for distant landscape.	112542	112552	112572
R1	6X	For panchromatic and infra-red films. Turns blue subjects darker, and red and green subjects lighter. Gives moonlight effect on daylight landscape scenes.	112544	112554	112574
<b>FOR COLOR FILM</b>					
Skylight 1A		For all daylight color film. For distant snow or mountain scenes on overcast days and for open shade under a clear sky to reduce excessive blue.	112319	112334	112364
80C		Use with daylight Kodachrome, Anscochrome and Ektachrome for flash bulb (except SM & SF) photography. Also gives cooler colors for early morning and late afternoon pictures and where fill in flash is used.	112323	112338	112368
80B		Use with the same daylight color films as above indoors with photofloods.	112320	112335	112365
81A		Use with the same daylight type color films as above indoors with electronic flash.	112321	112336	112366
82A		Use with the same daylight type color films as above and with Kodacolor, Ektacolor, Agfacolor CN 14 and CN 17 in early morning and late afternoon.	112322	112337	112367
85		Use with indoor films (type A) in daylight. Also use with Kodacolor as correction filter for electronic flash.	112316	112331	112361
85B		For use with indoor films (Type B) such as Ektachrome B, High Speed Ektachrome B, Super Anscochrome Tungsten in daylight.	112317	112332	112362
85C		Use with indoor films (Type F), Kodachrome F and Ektachrome F in daylight.	112318	112333	112363

# LENS ACCESSORIES... REPRODUCING APPARATUS

## LENS ACCESSORIES

LENS	Filter Size	LENS HOOD with leather case	LENS CAP	DUST CAP R
<b>Super Canonmatic</b>				
35mm F/2.5R	58mm	112619 \$ 9.95	112526 \$1.00	112630 \$1.00
58mm F/1.2R	58mm	112620 \$ 9.95	112526 \$1.00	112630 \$1.00
50mm F/1.8R	58mm	112620 \$ 9.95	112526 \$1.00	112630 \$1.00
85mm F/1.8R	58mm	112520 \$13.50	112526 \$1.00	112630 \$1.00
100mm F/2.0R	58mm	112520 \$13.50	112526 \$1.00	112630 \$1.00
135mm F/2.5R	58mm	112520 \$13.50	112526 \$1.00	112630 \$1.00
<b>Canonmatic</b>				
200mm F/3.5R	58mm	112520 \$13.50	112526 \$1.00	112630 \$1.00
<b>R Lens (Preset)</b>				
100mm F/3.5R	40mm	112518 \$ 4.50	112523 \$ .75	112630 \$1.00
135mm F/3.5R	48mm	112519 \$ 4.95	112524 \$ .75	112630 \$1.00
<b>R Lens (Manual)</b>				
300mm F/4R	48mm	Supplied w/Lens	100mm <sup>3</sup>	112630 \$1.00
400mm F/4.5R	48mm	Supplied w/Lens	100mm <sup>3</sup>	112630 \$1.00
600mm F/5.6R	48mm	Supplied w/Lens	118mm <sup>3</sup>	112630 \$1.00
800mm F/8R	48mm	Supplied w/Lens	112mm <sup>3</sup>	112630 \$1.00
1000mm F/11R	48mm	Supplied w/Lens	100mm <sup>3</sup>	112630 \$1.00

<sup>3</sup>Special Order.

## Copy Stand Model 3 R

A must for every phase of close-up photography including macrophotography, when use in conjunction with Bellows R and or extension rings and tubes; photomicrography, when use with Bellows R and photomicrographic Hood; or simple copy work when use with Close-Up lenses.

112688

\$99.95



**Note**—Each Complete Set consists of the following:

**STANCHION:** Upright post attached to base board on which copying apparatus is mounted.

**CARRYING ARM:** Sliding arm, mounts camera to Stanchion. Can be mounted in either upward or downward position depending upon magnification desired.

**CAMERA HOLDER R3:** Hold camera perfectly level for precise copy work.

**58mm CLOSE-UP LENS 450.** In plastic case. Attaches to camera lens for greater magnification.

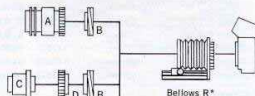
**BASE BOARD:** Made especially flat for precise copy work.

**CASE:** For storage of apparatus when disassembled.

## DIAGRAM SHOWING VARIOUS COMBINATIONS OF LENS, ADAPTER, AND BELLOWS R

For detailed information of roman numerals below, refer to roman numerals on next page

I. Close-Up and Macrophotography (Bayonet Mount Lenses)



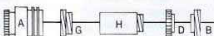
II. Close-Up and Macrophotography (Screw Mount Lenses)



III. General and Close-Up



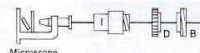
IV. Macrophotography (Bayonet Mount Lenses)



V. Macrophotography (Screw Mount Lenses)



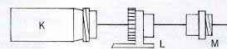
VI. Photomicrography



VII. Telephoto



VIII. Long Telephoto



- A. Cannon Lens R
- B. Bellows Adapter R
- C. Canon Lens
- D. Lens Mount Converter A
- E. Lens Head
- F. Lens Head Adapter
- G. Macrophoto Coupler
- H. Extension Tube
- I. Photomicrographic Hood
- J. Canon Lens 200 mm F 3.5
- K. Lenses over 300 mm
- L. Lens Supporter
- M. Lens Intermediate Tube

\*Bellows Adapter R removable from Bellows R

**BELLOWS R AND ALLIED ACCESSORIES**

(Their Combination and Use)

Nature of Photography	Lens Used Together	Other Accessories Required		Performance Data	
		Essential	Desirable	Focusing Range	Magnification
<b>I.</b> Close-Up & Macrophoto	R 50 mm F 1.8		Waist Level Viewer	201 mm—275 mm 7 $\frac{1}{4}$ "—10 $\frac{1}{4}$ "	1/1.4×—3.1×
	R 85 mm F 1.9		"	327 mm—389 mm 12 $\frac{1}{4}$ "—15 $\frac{1}{4}$ "	1/2.3×—1.9×
	R 100 mm F 2, 3.5		"	388 mm—498 mm 15 $\frac{1}{4}$ "—19 $\frac{1}{4}$ "	1/2.7×—1.6×
	R 135 mm F 3.5		"	541 mm—803 mm 21 $\frac{1}{4}$ "—31 $\frac{1}{4}$ "	1/3.7×—1.2×
<b>II.</b>	25 mm F 3.5	Mount Converter A	"	116 mm—232 mm 4 $\frac{1}{4}$ "—9 $\frac{1}{4}$ "	2.0×—7.1×
	28 mm F 2.8, 3.5	"	"	125 mm—239 mm 5"—9 $\frac{1}{4}$ "	1.8×—6.2×
	35 mm F 1.5, 1.8, 2.8	"	"	143 mm—256 mm 5 $\frac{1}{4}$ "—10 $\frac{1}{4}$ "	1.5×—5.0×
	50 mm F 1.2, 1.8, 2.8	"	"	206 mm—296 mm 8 $\frac{1}{4}$ "—11 $\frac{1}{4}$ "	1.0×—3.4×
	85 mm F 1.5, 1.9	"	"	336 mm—385 mm 13 $\frac{1}{4}$ "—15 $\frac{1}{4}$ "	1/1.6×—2.1×
	100 mm F 2, 3.5	"	"	400 mm—443 mm 15 $\frac{1}{4}$ "—17 $\frac{1}{4}$ "	1/1.9×—1.8×
	135 mm F 3.5	"	"	537 mm—664 mm 21 $\frac{1}{4}$ "—26 $\frac{1}{4}$ "	1/2.6×—1.3×
<b>III.</b> General & Close-Up	85 mm F 1.9 (Chrome Mount)	Lens Head Adapter for 85 F 1.9		Infinity—35 cm (13.7")	up to 1.4×
	100 mm F 3.5	for 100 F 3.5		Infinity—41 cm (16.1")	up to 1.2×
	100 mm F 2	for 100 F 2		"	up to 1.2×
	135 mm F 3.5 (Chrome Mount)	for 135 F 3.5		Infinity—54 cm (21.5")	up to 1.0×
<b>IV. &amp; V.</b> Macrophoto (2×—6×)	R 50 mm F 1.8	58 mm Macrophoto Coupler, Lens Mount Converter A, Extension Tubes	Waist Level Viewer Copy Stand 3 R	Depending on Extension Tubes See Note (2)	
<b>VI.</b> Photomicrography	Not used	Photomicrographic Hood, Lens Mount Converter A, Microscope	Copy Stand 3 R		
<b>VII.</b> Telephoto	200 m F 3.5	Mount Converter A			
<b>VIII.</b> Long Telephoto	300 mm to 1000 mm	Lens Supporter Intermediate Tube		See Lens Specifications Chart	

Note: (1) Lenses marked R are for lenses for Canonflex; others are for lenses for range-finder type cameras.

(2) Extension Tube 25 mm for 2—4.5×, 50 mm for 2.5—4.9×, 75 mm for 3—5.4×, 100 mm for 3.5×—6.1×, 150 mm for 4.5—6.4×, and 200 mm for 5.4×—6.4×

(3) Waist Level Viewer cannot be used with Canonflex RP

(4) Use Lens Head only, unscrewing the helicoid. Also, remove Bellows Adaptor R from Bellows R

**CLOSE UP—MACROPHOTOGRAPHY—PHOTOMICROGRAPHY**

**CLOSE UP ACCESSORIES**

**BELLOWS R**

Multi-purpose accessory designed exclusively for use with single lens reflex camera. Attaches between the lens and camera body for focusing on extreme close-ups, with macrophotography and telephoto lenses. It is simple to operate, lightweight, compact in design and extremely rugged in construction. Made with the same rigid precision care as the other Bell & Howell/Canon products. With Case.

**112144**

**\$55.00**

**58mm Close-Up Lens 450 in Plastic Case**

**112133**

**\$16.50**

**58mm Close-Up Lens 240 in Plastic Case**

**112134**

**\$16.50**

**Lens Mount Converter A (2.8mm)**

**112135**

**\$11.50**

**Lens Head Adapter for 100mm F/3.5 Lens**

(Serial No. up to 800001)

**112136**

**\$5.50**

**Lens Head Adapter for 100mm F/2 Lens**

**112137**

**\$6.95**

**Lens Head Adapter for 135mm F/3.5 Lens**

(Serial No. up to 800001)

**112138**

**\$6.95**

**Canon Close-Up Lenses 450 and 240**

For close-up photography, both screw into the front of the Super Canonmatic Lens R 50mm F/1.8 (standard lens), 450 has focusing range from 55cm to 33cm (approx. 22"-13"). 240 has focusing range from 33cm to 26cm (approx. 13"-10").

Distance	Field of View		Reduction Ratio
	in millimeter	in inch	
450	infinity	316mm×210mm	12 $\frac{1}{2}$ "×8 $\frac{1}{4}$ " 1/9
	—0.6mm	166mm×111mm	6 $\frac{1}{2}$ "×4 $\frac{1}{4}$ " 1/4.6
240	infinity	166mm×111mm	6 $\frac{1}{2}$ "×4 $\frac{1}{4}$ " 1/4.6
	—0.6mm	112mm×75mm	4 $\frac{1}{4}$ "×3" 1/3.6

**MACROPHOTO ACCESSORIES**

**MACROPHOTO EXTENSION TUBES**

**25mm**

**112589**

**\$ 3.50**

**50mm**

**112590**

**\$ 4.50**

**75mm**

**112591**

**\$ 5.95**

**100mm**

**112592**

**\$ 7.50**

**150mm**

**112593**

**\$ 9.95**

**200mm**

**112594**

**\$12.50**

**MACROPHOTO COUPLER 58mm**

Use to Couple 50mm F/1.8 Super-Canonmatic Lens with Extension Tubes.

**112695**

**\$4.95**

**MACROPHOTO STRUT**

For use with extension tube combinations in excess of 75mm. This is necessary to hold the lens in correct relationship with the subject with long extension tubes to prevent distortion and improve focus.

**112596**

**\$5.95**

**EXTENSION RINGS**

A type of extension ring attached between the Canonflex lens and Extension Ring or Extension Tube. For simple macrophotography without using a Bellows R. Mainly used to convert Bayonet reflex lenses for use with screw mount Canon cameras.

Extension Ring Set (A, B, and C)

**112689**

**\$7.00**

Extension Ring A (6mm)

**112690**

**\$2.35**

Extension Ring B (9mm)

**112691**

**\$2.50**

Extension Ring C (12mm)

**112692**

**\$2.75**

**Mount Converter B (13.2mm)**

A type of extension ring attached between the Canonflex lens and Extension Ring or Extension Tube. Mainly used to convert Bayonet Reflex Lenses for use with screw mount Canon cameras for simple macrophotography without using a Bellows R.

**112693**

**\$6.50**

**Photomicrographic Accessory**

**Photomicrographic Hood**

**112549**

**\$7.50**

**NOTE:** Refer to Table for Combination and Use of Bellows R, Lens Mount Converter A, Lens Head Adapter etc., on pages 8, 9, 11 and 12.



**EXTREME CLOSE-UP, MACROPHOTOGRAPHY with a Canonflex  
without Bellows R**

A Canonflex with Super Canomatic R 50 mm F 1.8 can be used for various ranges of extreme close-up photography and macrophotography by inserting between the camera body and the lens various extension rings and tubes singly or in combination, without Bellows R.

Below, illustrated with a performance table, is a typical combination example using a Mount Converter A (which gives an extension of 2.8 mm), Mount Converter B (which gives an extension of 13.2 mm) and an Extension Ring A (which gives an extension of 6 mm).

**COMBINATION:**

(1) Canonflex Body + Lens Mount Converter A + Extension Ring A  
(2) (3)  
(4) + Lens Mount Converter B + Super Canomatic R 50 mm F 1.8  
(5)

**PERFORMANCE:**

at LENS DISTANCE SCALE POSITION (Meter)	~ 0.6 mm
can be focused for OBJECT-TO-FILM DISTANCE	245 ~ 226 mm
to cover FIELDS-OF-VIEW	55×83 ~ 45×68 mm
with REDUCTION	1/2.3 ~ 1/1.9
by increasing EXPOSURE	2× ~ 2.3×

**REFERENCE DATE FOR CLOSE-UP WORK with a Canonflex  
using a Bellows R**

(A) Bellows R + Lenses for Canonflex  
R 50 mm F1.8

Bellows R Scale	0	10	20	30	40	50	60	70	80	90	100	110	125
Distance from film plane to object in mm	207	201	201	204	209	214	221	329	237	245	253	262	275
Magnification	1/1.4	1/1.1	1.1	1.3	1.5	1.7	1.9	2.1	2.3	2.5	2.6	2.8	3.1

R 85 mm F 1.8

Distance from film plane to object in mm	389	355	340	332	328	327	329	332	336	341	347	354	364
Magnification	1/2.3	1/1.8	1/1.5	1/1.3	1/1.1	1	1.1	1.3	1.4	1.5	1.6	1.7	1.9

R 100 mm F 2

Distance from film plane to object in mm	498	450	421	405	393	390	388	388	390	394	398	403	411
Magnification	1/2.7	1/2.2	1/1.8	1/1.5	1/1.3	1/2.1	1	1.1	1.2	1.3	1.4	1.5	1.6

R 135 mm F 3.5

Distance from film plane to object in mm	803	706	648	610	584	567	556	548	544	541	541	542	545
Magnification	1/3.7	1/2.9	1/2.4	1/2	1/1.8	1/1.6	1/1.4	1/1.3	1/1.2	1/1.1	1	1.1	1.2

Note 1. 1 inch=2.54mm

(B) LENS HEAD of 100mm and 135mm Lens for Rangefinder Cameras + LENS HEAD ADAPTER + BELLWS R  
100mm F 2 100mm F 3.5

Bellows R Scale	0	10	20	30	40	50	60	70	80	90	100	110	125
Distance from film plane to object	∞	0.88	0.54	0.43	0.38	0.36	0.35	0.34	0.34	0.34	0.34	0.34	0.35
Magnification	—	1/8.4	1/4.2	1/2.8	1/2.1	1/1.7	1/1.4	1/1.2	1	1.1	1.2	1.3	1.4

135mm F 3.5

Distance from film plane to object	∞	2.1	1.2	0.91	0.75	0.68	0.63	0.6	0.58	0.56	0.55	0.55	0.54
Magnification	—	1/13.4	1/6.7	1/4.5	1/3.4	1/2.7	1/2.2	1/1.9	1/1.7	1/1.5	1/1.3	1/1.3	1

(C) CANON LENS for RANGE-FINDER CAMERA + LENS MOUNT CONVERTER A + BELLWS R + CANONFLEX

25mm

Scale	0	10	20	30	40	50	60	70	80	90	100	110	125
Distance from film plane to object	116	124	132	141	151	160	169	179	188	198	208	218	232
Magnification	2	2.4	2.9	3.3	3.7	4.1	4.5	4.9	5.3	5.7	6.1	6.5	7.1

28mm

Distance from film plane to object	125	133	141	150	159	168	177	186	196	205	215	225	239
Magnification	1.8	2.2	2.5	2.9	3.2	3.6	3.9	4.3	4.6	5	5.3	5.7	6.2

35mm

Distance from film plane to object	148	154	161	169	177	186	195	204	213	222	232	241	256
Magnification	1.5	1.8	2	2.3	2.6	2.9	3.2	3.4	3.3	4	4.3	4.6	5

50mm

Distance from film plane to object	206	208	212	218	224	232	239	247	256	264	273	282	296
Magnification	1	1.2	1.4	1.6	1.8	1.9	2.1	2.3	2.5	2.7	2.9	3.1	3.4

85mm

Distance from film plane to object	355	343	338	336	337	339	343	348	354	360	367	374	385
Magnification	1/1.6	1/1.3	1.1	1	1.1	1.2	1.4	1.5	1.6	1.7	1.8	2	2.1

100mm

Distance from film plane to object	443	423	410	404	401	400	401	404	408	413	418	424	434
Magnification	1/1.9	1/1.6	1/1.3	1/1.2	1/1.1	1	1.1	1.2	1.3	1.4	1.5	1.6	1.8

135mm

Distance from film plane to object	664	619	589	569	556	547	541	538	537	537	539	542	547
Magnification	1/2.6	1/2.1	1/1.9	1/1.6	1/1.5	1/1.3	1/1.2	1/1.1	1	1	1.1	1.2	1.3

Note: Usually, telephoto lens is more recommendable for macrophoto than wide angle lens.