

Canon

Canonflex R2000 Canonflex RP

Canon Camera Company, Inc. 312 Shimo-Maruko-cho, Ohta-ku, Tokyo, Japan

Canon New York: 404 Park Avenue South, New York 16, N.Y., U.S.A.

Canon Europe: 40 Rue du Stand, Geneva, Switzerland



The Ultimate in the Single-Lens Reflex...



The new, Canonflex R2000!

The new, sensational Canonflex R2000 is a professional-type 35mm single-lens reflex camera of the highest quality. Now, incorporating the fastest shutter speed of 1/2000th of a second, it is designed specially for professionals, serious amateurs... for those who can afford this fine camera.

The Canonflex R2000 incorporates all the precision features for which the name of Canon is pre-eminent in the world of photography. The new "R2000" excels in optical as well as mechanical perfection... making it truly the Ultimate in the high quality and high performance single-lens reflex camera today.

Quick-as-a-wink, Canonflex R2000 features the Super Canonmatic System to let you view and focus with full brightness at all times! The new Canonflex R2000 is easy-to-operate, rugged in construction, and highly functional. With the complete range of photographic aids provided for by Canon, you'll enjoy every phase of photography at its Canon best!

Canon Presents The Popular Priced...



Canonflex Model RP!

The new, Canonflex Model RP is for those who want to own the precision single-lens reflex camera of Canon quality at a moderate price.

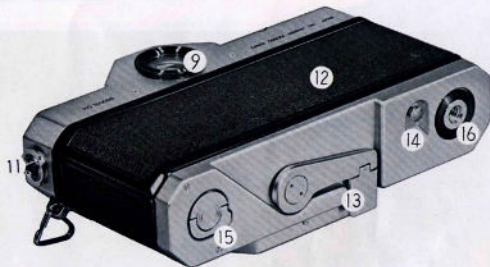
The new Model RP has all the precision features of Canonflex... the predecessor of RP. Nothing is sacrificed feature-wise to lower the high standard quality in order to make it less expensive for you. It was made possible by the unsurpassed engineering of Canon, plus the streamlined production system. RP is a moderate-priced high quality single-lens reflex camera designed for millions of photographers around the world. RP has a built-in pentaprism instead of the detachable ones that are seen on the Canonflex R2000.

The new RP incorporates the fully-automatic Super Canonmatic system, which enables you to view and focus at full-aperture brightness! A complete range of photographic aids and interchangeable lenses from wide-angle to telephoto are also available to enhance the versatility of the camera. Black finished RP is also available.

Read feature to feature in the following pages and see why Canon's single-lens reflex are popular among the knowledgeable photographers the world over.



- 1 Lens Pre-Set Aperture Ring
- 2 Knurled Focusing Ring
- 3 Lens Visual Aperture Ring
- 4 Lens Depth-of-Field Scale
- 5 Shutter Release Button
(Cable Release Hole)
- 6 Exposure Counter Dial
- 7 Single-Pivot, Shutter Speed Dial
- 8 Film Rewind Crank
- 9 Eye-Level Pentaprism Finder



- 9 Film Speed Reminder
(DIN and ASA)
- 10 Direct Flash Connector Socket
- 11 Hinged Back
- 12 Trigger-Action Winding Lever
- 13 Film Rewind Release Button
- 14 Back Cover Opening Key
- 15 Tripod Socket



Mirror snaps up...

Diaphragm closes down to pre-selected stop...

Shutter actuated...



About Super Canomatic System...

When the Canonflex, the predecessor of Canonflex R2000, was introduced, Canon opened up an entirely new horizon in the photographic concepts and versatility. Canon's entry in the 35mm single-lens reflex bracket with its fully-automatic springback mirror and diaphragm had rocked the world of photography. It was the first attempt made by high quality camera manufacturers to produce a 35mm single-lens reflex that lets the photographer view and focus with full aperture brightness at all times.

Here's how Super Canomatic works: As the shutter button is pressed, the mirror snaps up and returns automatically immediately after exposure. Simultaneously, the diaphragm of the Super Canomatic lens closes down to the pre-selected aperture stop and reopens to full aperture instantly. Thus, viewing and focusing before and after the exposure can be done with full aperture brightness. There's no blackout with the Super Canomatic System.

This is the Canon-exclusive feature common with all single-lens reflex cameras produced by Canon Camera Company, Inc.

Super Canomatic Lenses...

A complete range of Super Canomatic lenses from wide-angle to telephoto are at service for the owners of Canonflex R2000.

The diaphragm of the Super Canomatic lenses works automatically. As the shutter is released, the diaphragm closes down to the pre-selected aperture stop and then springs back automatically immediately after exposure. These wide range of interchangeable lenses let you cope with almost any photographic situation.

Complete Range of Photographic Aids...

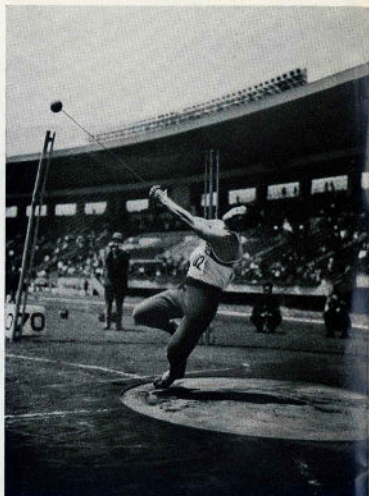
Canon offers a complete range of photographic aids for use with the new Canonflex R2000. Though Canonflex R2000 is quite versatile in itself, number of photographic aids are provided ... for copy work, close-ups, photomicrography, photomicrography ... for all phases of photography at its finest.

Mirror begins to snap up...

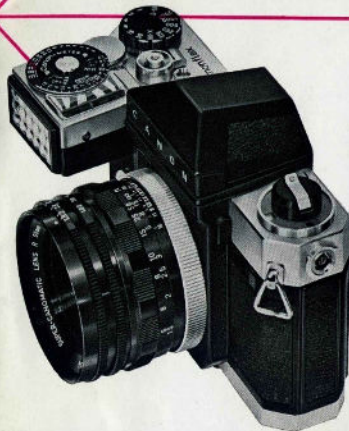
Diaphragm reopens...

1/15 sec.





Canonflex RP has a single-pivot rigid shutter dial. It has the equally spaced 11 shutter speed readings from 1 second to 1/1000th of a second, plus Bulb and X for electronic synchronization.



Canonflex R2000



12 Shutter Speeds from 1 to 1/2000 second...

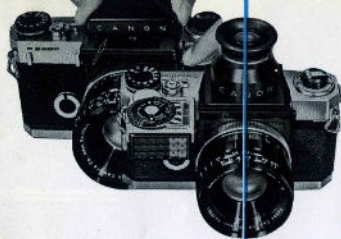
Now, Canon has successfully completed in incorporating 1/2000th of a second...the fastest shutter speed now available on any camera in the world.

With the development of high speed Super Canonomatic lenses and fast film rating, you can stop almost anything now! The fast Super Canonomatic lenses in combination with 1/2000 second and fast film has opened up a new lane in the world of photography.

You can stop...

The shutter dial of the Canonflex R2000 is on a single-pivot with 12 speed readings — **2000**, 1000, 500, 250, 125, 60-X, 30, 15, 8, 4, 2, 1, — equally spaced linear scale plus Bulb-Time exposure. The electronic flash synchronizes at 60-X.





Easy Viewing and Focusing...

Brightest single-lens reflex viewfinder with high resolving and specially grained unique focusing glass...

Easy Viewing...

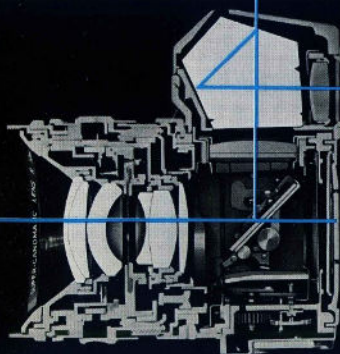
Canonflex R2000 is single-lens reflex type which enables you to view the scene without parallax error. What is seen through the viewfinder eyepiece is the actual scene recorded on film. The bright viewfinder let you view the object very easily.

Easy Focusing...

Canonflex R2000 incorporates high resolving and specially grained focusing glass. On the high resolving and specially grained ground glass, you can see the sharpest image of subjects by rotating the focusing ring.

Eye-Level Pentaprism, Interchangeable with Waist-Level Viewer...

For ease in picture taking, viewing and focusing is done normally at eye-level. Pentaprism is interchangeable with the waist-level viewer which can be conveniently used for copy work, when the camera is on tripod, etc. The waist-level viewer has 4-fold magnification. Choose either viewfinder depending on the situation.



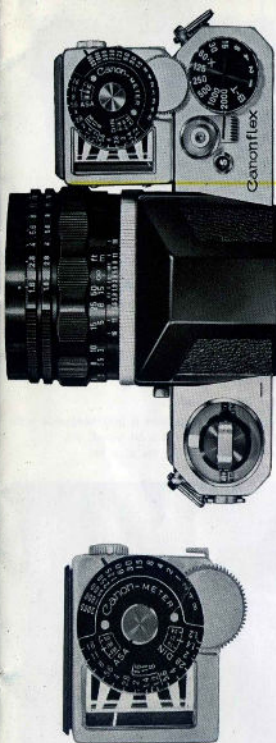
Quickest, Trigger-Action Winding... 3 pictures per second!

A single-stroke of the Canonflex R2000 trigger-action lever advances the film, cocks the shutter, counts exposure all in one operation. At the same time, it charges the Super Canonmatic mechanism for

automatic operation of springback diaphragm and mirror for the next exposure.

You can take as many as 3 pictures per second! The fool-proof mechanism of Canonflex R2000 prevents accidental advancement of film. The lever cannot be wound unless the shutter is released.





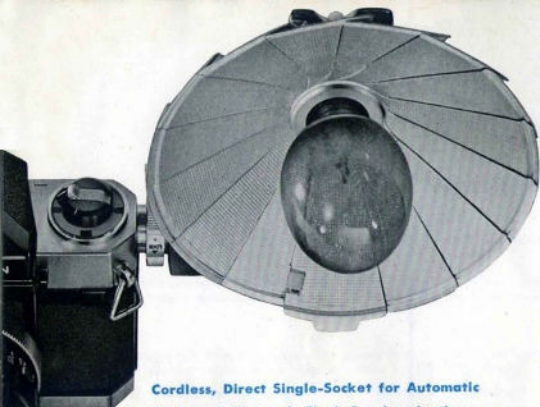
Semi-Automatic Exposure Setting...

Canonflex R2000, RP have a detachable exposure meter coupled to the shutter speed dial. It is mounted on the front of the camera...and can be used separately. Canon Meter R has the highest sensitivity, gives you accurate exposure reading at all times, and works for an object having light value as low as 4 (LV). This means that this meter will work in poor lighting condition where you have to use 1/4 second at F1.8, with film sensitivity of ASA 100 rating. Canon Meter R can be used in two phases of lighting condition: in poor light as well as in bright light. It is manipulated by the control knob on the side of the meter.

Semi-automatic exposure setting of Canon Meter R lets you adjust the exposure with utmost ease. As the meter indicator is turned to match the pre-set aperture reading to the pointer, the shutter speed is automatically set to the correct exposure time. Conversely, if the shutter is first set, the correct lens aperture will be automatically set. An incident light attachment is provided.

The meter dial is calibrated in both ASA and DIN. With film of ASA 100 rating, the sensitivity range of Canon Meter R is:

Low Sensitivity Range	Light Value 10-19 lumen
High Sensitivity Range	Light Value 4-13 lumen



Cordless, Direct Single-Socket for Automatic Flash and Electronic Flash Synchronization...

One of the outstanding features of all Canon Cameras... direct single flash socket is incorporated in the new Canonflexes R2000 and RP.

Either BC flash unit, or electronic flash unit, is fitted directly to the single bayonet fitting socket on the camera. No troublesome dangling wires to get in your way. The circuit is automatically connected as the unit is attached. Specially fitted cam flash gun, Canon Flash Model V or any regular flash gun, can be used.

The setting of the shutter speed dial automatically sets the synchro mechanism with the shutter mechanism for accurate flash timing. The new Canonflexes R2000 and RP can be used with any kind of flash bulb or electronic flash. No further setting or adjustment necessary.

The table below shows you the flash synchronization for all types of flash bulb available today.

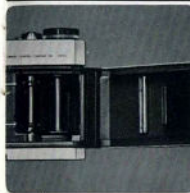
○ Synchronized
X Not synchronized

Shutter Speed	2000	1000	500	250	125	60X	30	15	8	4	2	1	B-T
Type of Bulb FP	○	○	○	○	○	○	X	X	○	○	○	○	○
Type of Bulb M	X	X	X	○	○	X	X	○	○	○	○	○	○
Type of Bulb F	X	X	X	X	X	X	○	○	○	○	○	○	○
Electronic Flash	X	X	X	X	X	○	○	○	○	○	○	○	○



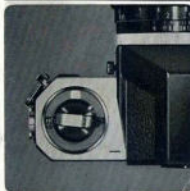
Easy Film Loading and Rewinding...

Loading of film with the new Canonflexes R2000 and RP are extremely easy. It has a foolproof hinged-back. Canonflex R2000 incorporates FILM REWIND CRANK which assures smooth and easy rewinding of film... prevents film from damage.



Anti-Film-Curl Roller...

The new Canonflexes R2000 and RP have ANTI-FILM-CURL ROLLER on the pressure of the back cover. The roller is to prevent curling and warping of film to assure critical focusing even at full aperture of the highest speed lenses where the depth-of-field in focus is extremely shallow.



Easy-to-Read, Film Type and Speed Indicator...

The Canonflexes R2000 and RP have FILM-TYPE INDICATOR to show the type of film in use; black & white, daylight color, tungsten-type color. It also has the film sensitivity indicator in both ASA and DIN. The film-type and speed indicator is manually set with selector rings, which are revealed when the rewind crank is lifted.



Automatic Exposure Counter...

The AUTOMATIC EXPOSURE COUNTER of Canonflexes R2000 and RP start from "0" to "40". It shows you the number of frames exposed. One frame is advanced as the shutter is cocked. The indicator returns to "S" or starting position as the back cover is opened.



Delayed Action Device...

Built-in Self-Timer...

BUILT-IN SELF-TIMER of Canonflexes R2000 and RP have the maximum delay of 10 seconds. It is of shutter button type. Canon's unique shutter release button system eliminates confusion between ordinary and time exposure. Cable release hole is provided.

Bellows R

The Bellows R is a multi-purpose photographic aid designed exclusively for use with any of the Canon single-lens reflex cameras. The Bellows R will double the versatility of your Canonflex R2000. Canon Bellows R is made with the same rigid precision care and quality control as the world-famed Canon cameras and lenses. It is simple to operate, compact in design, and lightweight.



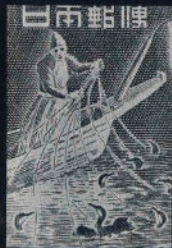
It is rugged in construction and endures long period of steady use. Canon Bellows R assures you of utmost precision which is essential for photomacrography, photomicrography, and other special photography.

Bellows R mounts all types of Canon lenses... lenses for single-lens reflex cameras as well as those that are designed for range finder type cameras. The bellows can be adjusted anywhere between "0" and 125mm.

The Bellows R is used as focusing device for lenses over 200mm in focal length.

Pictures of postage stamp (22x26mm) below show the change in magnification as the bellows is extended from "0" to "110mm"

Scale Reading ... 0 50 110



How to take Photomacrography and Close-ups

Photomacrography can be taken with your Canonflex R2000 in combination with the Bellows R. The camera should be placed on a tripod or a copying stand for this purpose. The most conveniently used is the Bellows in combination with the Super Canonomic Lens R 50mm 1:1.8. This lens will allow you to go from extreme close ups (at "0" of the scale, the image of 1/1.4) to macrophoto (at "125" approximately 3-fold magnification) continuously. This means that a subject which is 1/3 of the 35mm film in size will be magnified to fill the entire film. Other Canon lenses can also be used for photomacrography. Bellows R can be adjusted in vertical or horizontal position.

How to take Close-ups

For easy close-ups, Canon Close-up Lens 450 or 240 can be conveniently used.

Focusing range of 450 and 240 are:

450 55cm. — 33cm. (approx. 22"—13")

240 33cm. — 26cm. (approx. 13"—10")



Film Magazine...

Holds up to 36 exposures of film. Nickel in black finish, it has scratch-proof film slots. Supplied in plastic case.

Lens Mount Converter...

Canon lenses—those designed for single-lens reflex cameras and those of rangefinder type camera—are interchangeable by using Canon Lens Mount Converters. There are two types of converter; A and B. Converter A is used to mount the screw-in type lenses (for rangefinder type cameras) on the single-lens reflex cameras which are of bayonet type mount. Converter B is used to convert the bayonet type mount lenses (for single-lens reflex cameras) to screw-in type mount to be used on the rangefinder type cameras.

Focusing Adapter...

Rangefinder type Canon camera lenses (screw-in mount) with focal length of 85mm, 100mm, and 135mm can be used with the Canonflex R2000 in combination with Focusing Adapter RA.

Camera Holder R2...

Camera Holder R2 can be used to steady the camera position on tripod or copying stand. Used for easy and versatile copy work. The holder has tripod bush on two sides.

Waist-Level Viewer...

The Waist-Level Viewer is convenient for taking picture with Canonflex R2000 at waist-level... for copy work, photomacrography, or whenever the camera is on a tripod or copying stand. It is interchangeable with the eye-level pentaprism.

Film Magazine



Lens Mount Converter



Focusing Adapter RA



Camera Holder R2



Waist-Level Viewer