



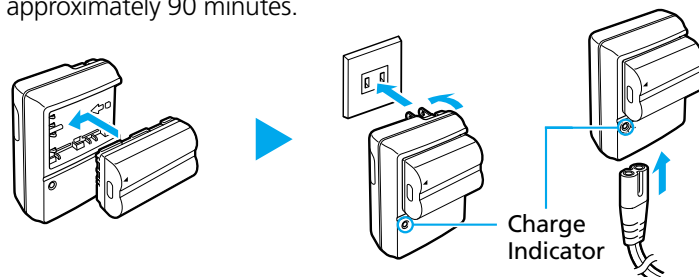
The following manuals are supplied with your camera. Please refer to them as need be.

Contents of This Guide	Reference Guides
Included accessories and separately sold equipment information	System Map
1. Install the battery pack and the CF card.	This Guide
2. Shoot images with the camera.	Quick Start Guide
3. Play back the images.	Camera User Guide
4. Erase any unwanted images.	
Learn the names of camera components.	
5. Print the images.	Direct Print User Guide
6. Install the software.	Printer User Guide (Supplied with a printer)
Connect the camera to a computer.	Software Starter Guide
7. Download the images to a computer.	ZoomBrowser EX Software User Guide ImageBrowser Software User Guide
What you can do with the software	These PDF format manuals are available on the Canon website. Please download them from the following URL: http://web.canon.jp/imaging/information-e.html
The various ways of using the software	

1 Preparing the Camera → Camera User Guide

A. Charge the battery pack.

Place the battery pack in the battery charger and plug the charger into a power outlet or attach the power cord to the battery charger and plug the other end into a power outlet. The charge indicator lights red while charging and changes to green when the battery pack is charged. Charging the battery pack takes approximately 90 minutes.

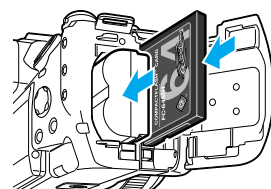


• Battery charger model names and types vary by region.

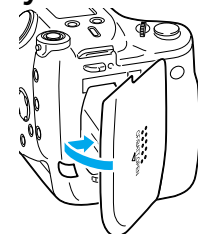
B. Slide the CF card/battery cover open.



C. Insert the CF card and the battery pack.

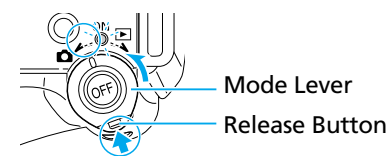


D. Slide the CF card/battery cover closed.

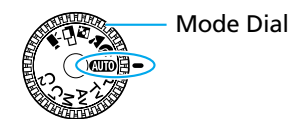


2 Shooting → Camera User Guide

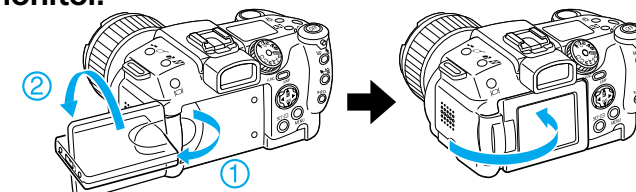
A. Turn the mode lever to **☑** (Shooting) while pressing the release button.



B. Turn the mode dial to **AUTO**.

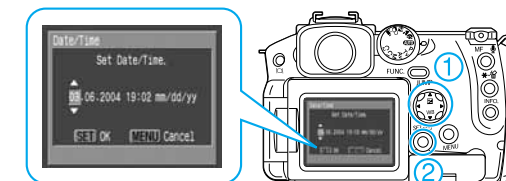


C. Open the LCD monitor.



D. Set the date and time. (first time the camera is powered on)

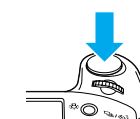
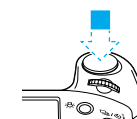
- Use the ◀ or ▶ arrow on the omni selector to select the items you wish to set, and use the ▲ or ▼ arrow on the omni selector to change the value.
- Check that the date and time shown are correct, then press the SET button.



E. Aim the camera at the subject and adjust the zoom ring to achieve the desired composition. (See "Zoom" in the "Quick Reference.")

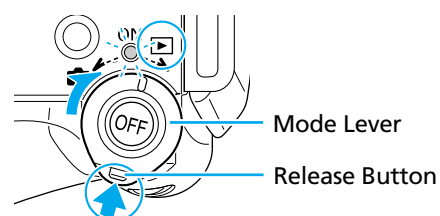
F. Focus and shoot.

- Press the shutter button halfway to focus (The camera focuses and two beeps sound.).
- Press the shutter button all the way to shoot.



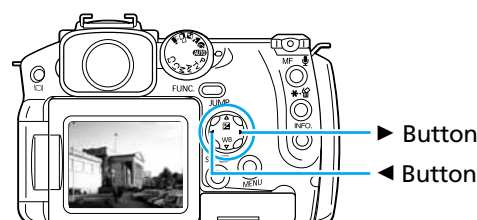
3 Playing back the Images → Camera User Guide

A. Turn the mode lever to **▶** (Playback) while pressing the release button.



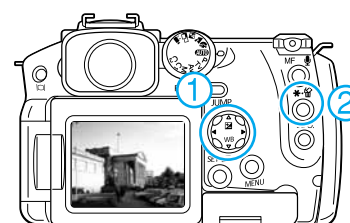
B. Play back the images.

Use the ◀ or ▶ arrow on the omni selector to display the image you wish to see.



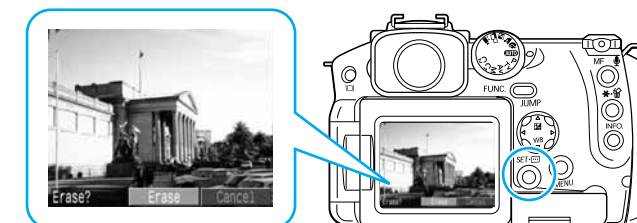
4 Erase an Image → Camera User Guide

A. Use the ◀ or ▶ arrow on the omni selector to select the image you wish to erase (1) and press the **☑** button (2).



B. When the confirmation screen appears, check that [Erase] is selected and press the SET button.

Select [Cancel] using the ◀ or ▶ arrow on the omni selector to cancel without erasing.



Flash

Press the button to switch between flash modes.
(Some settings are not available with certain shooting modes.)

When the red-eye reduction function is on

- ➔ Auto with red-eye reduction
- ➔ Flash on with red-eye reduction
- ➔ Flash off

When the red-eye reduction function is off

- ➔ Auto
- ➔ Flash on
- ➔ Flash off

Recordable area: 1 – 3.5 m (3.3 – 11.5 ft.) (telephoto)/50 cm – 5 m (1.6 – 16.4 ft.) (wide angle)

* Red-eye reduction: This feature reduces the effect of light reflecting back from the eyes and making them appear red.

Macro Mode

Press the button to display on the LCD monitor and the display panel. Use this mode to shoot close-ups of flowers or small objects.

* Recordable Area at Minimum Shooting Range <Shooting Distance>

- At wide angle end: approx. 157 x 115 mm (6.2 x 4.5 in.) <From the front of lens: 10 cm (3.9 in.)>
- At 63 mm (35mm film equivalent) zoom position: approx. 87 x 65 mm (3.4 x 2.6 in.) <From the front of lens: 30 cm (11.8 in.)>
- At 90 mm (35mm film equivalent) zoom position: approx. 150 x 112 mm (5.9 x 4.4 in.) <From the front of lens: 30 cm (11.8 in.)>

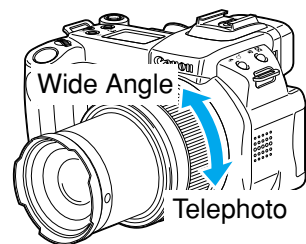
* The macro mode cannot be used if the distance to the subject is between 90 mm (35mm film equivalent) and the end of the telephoto range.

Switching the Display

Press the button to switch between the LCD monitor and viewfinder.



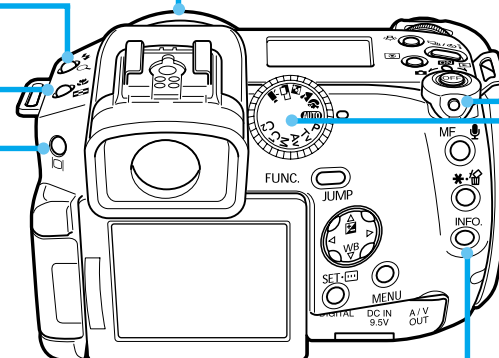
Zoom



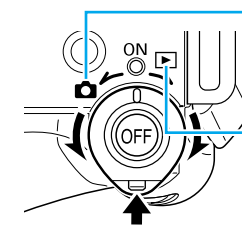
Wide Angle
Zoom out from the subject.

Telephoto
Zoom in on the subject.

* The zoom can be adjusted from 28 to 200 mm (35mm film equivalent).



Switching between Shooting/Playback

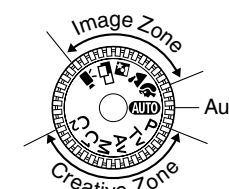


Shooting:
Turn the mode lever to while pressing the release button.

Playback:
Turn the mode lever to while pressing the release button.

Shooting Modes

- AUTO: AUTO**
The camera automatically selects settings.
- : **Portrait**
The background is blurred and the subject is in clear focus.
- : **Landscape**
For shooting wide landscape scenes.
- : **Night Scene**
For photographing human subjects against the backdrop of an evening sky or a night scene.
- : **Stitch Assist**
Images shot in Stitch Assist mode can be merged together on a computer to make a single panoramic image.
- : **Movie**
For shooting movies.



Changing the Displayed Information

Press the **INFO.** button to switch the displayed information as follows.

Shooting Mode:

- No Information
- ↕
- Information View

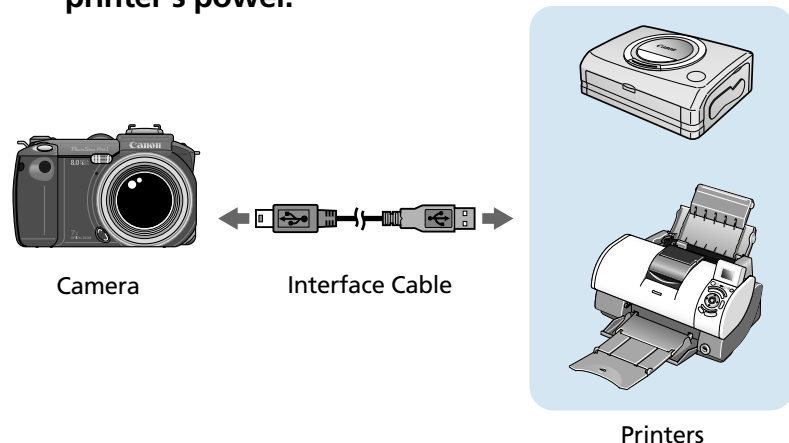
Playback Mode:

- ➔ Standard Information View
- ▼
- Detailed Information View
- ▼
- No Information

In addition, there are functions that can be set in each shooting mode. For details see "Functions Available in Each Shooting Mode" at the end of the Camera User Guide.

5 Printing with a Direct Print Compatible Printer → Direct Print User Guide

A. Connect the camera to the printer and turn on the printer's power.



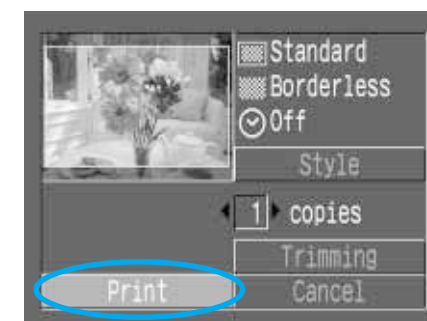
B. appears* in the upper left corner of the camera's LCD monitor, indicating that the printer is ready to print.

* The displayed icon may vary depending on the printer model.



C. Choose the image you wish to print and press the SET button.

Select print settings as required.



Print Setting Screen
(The screen may vary depending on the printer model.)

D. Select [Print] using the , , or arrow on the omni selector and press the SET button.

The printing of the image will start.



Please turn over

6 Preparing to Download Images to a Computer → Software Starter Guide

⚠ Never connect the camera to the computer before the software is installed.

List of Things to Prepare

- Camera and computer
- Canon Digital Camera Solution Disk provided with the camera
- Interface cable (use the cable provided with the camera)

A. Computer system requirements

■ Windows

OS	Windows 98 (First or Second Edition) Windows Me Windows 2000 Windows XP (Home Edition, Professional)
Computer Model	The above OS should be pre-installed on computers with built-in USB ports.
CPU	Windows 98/Windows Me/Windows 2000: Pentium 150 MHz or higher processor Windows XP: Pentium 300 MHz or higher processor For all of the above OSs: Pentium 500 MHz or higher processor is recommended (for editing movie).
RAM	Windows 98/Windows Me/Windows 2000: 64 MB or more Windows XP: 128 MB or more For all of the above OSs: 128 MB or more is recommended (for editing movie).
Interface	USB
Free Hard Disk Space	<ul style="list-style-type: none"> ● Canon Utilities <ul style="list-style-type: none"> - ZoomBrowser EX: 200 MB or more (Including the PhotoRecord printing program) - PhotoStitch: 40 MB or more ● Canon Camera TWAIN Driver: 25 MB or more ● Canon Camera WIA Driver: 25 MB or more
Display	800 x 600 pixels/High Color (16 bit) or better is required. 1,024 x 768 pixels or better is recommended.

■ Macintosh

OS	Mac OS 9.0 – 9.2, Mac OS X (v10.1/v10.2)
Computer Model	The above OS should be pre-installed on computers with built-in USB ports.
CPU	PowerPC
RAM	Mac OS 9.0 – 9.2: 64 MB or more of application memory Mac OS X (v10.1/v10.2): 128 MB or more
Interface	USB
Free Hard Disk Space	<ul style="list-style-type: none"> ● Canon Utilities <ul style="list-style-type: none"> - ImageBrowser: 120 MB or more - PhotoStitch: 30 MB or more
Display	800 x 600 pixels/32,000 colors or better is required. 1,024 x 768 pixels or better is recommended.

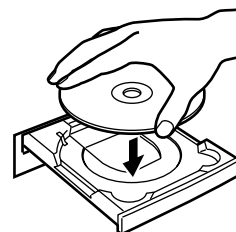
All procedures performed with a connection to a USB 2.0 compliant board are not guaranteed.

B. Install the Software.

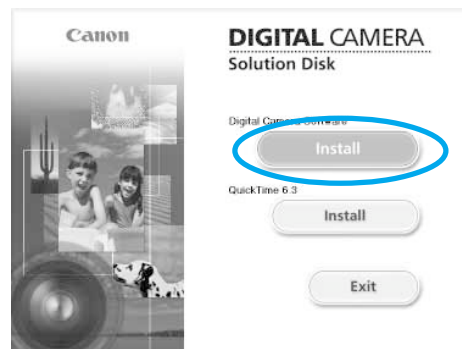
- a. Place the Canon Digital Camera Solution Disk in the computer's CD-ROM drive.

Macintosh

- With Mac OS X, double-click the CD-ROM icon, followed by the [Mac OS X] and [Canon Digital Camera Installer] () icons.
- With Mac OS 9, double-click the CD-ROM icon, followed by the [Mac OS 9] and [Canon Digital Camera Installer] () icons.

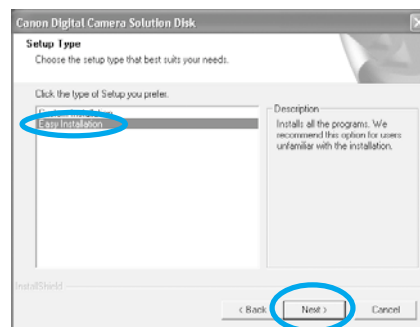


- b. Click the Digital Camera Software [Install] button and click [Next].

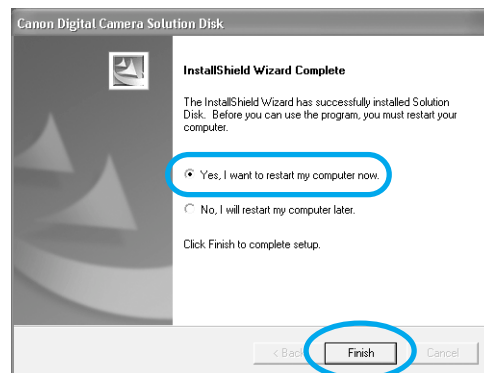


- c. Select [Easy Installation] and click [Next].

Proceed with the installation while reviewing installation settings.



- d. When the installation is over, select [Yes, I want to restart my computer now.] in the screen below and click [Finish].



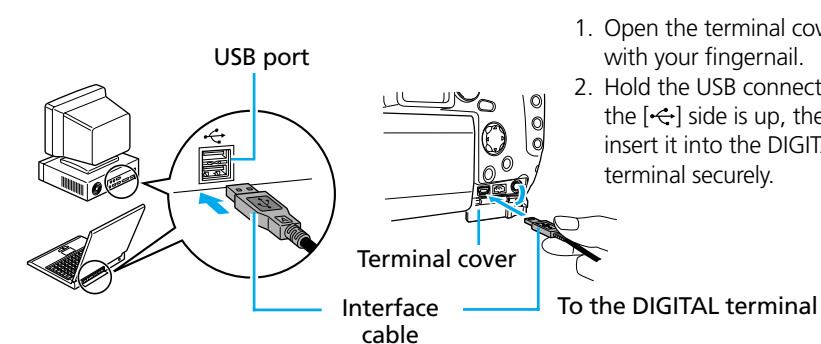
Macintosh

Once the installation is complete, click [Quit].

- e. Remove the disk from the CD-ROM drive after restarting.

C. Connect the camera to the computer.

- a. Connect the supplied interface cable to the computer's USB port and the camera's DIGITAL terminal.



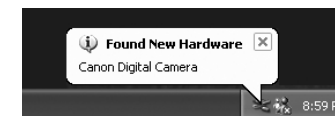
1. Open the terminal cover with your fingernail.
2. Hold the USB connector so the [←] side is up, then insert it into the DIGITAL terminal securely.

Once connected, the camera and the computer will be able to automatically communicate.

Windows

■ Windows XP

After a few moments, the dialog box shown to the right will appear and the USB driver provided with your Windows OS will automatically be installed.



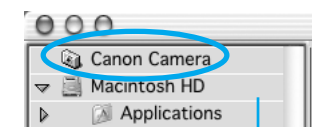
■ Windows 2000 / Windows Me / Windows 98

After a few moments, the Add New Hardware Wizard will appear and automatically install the USB driver.

Macintosh

■ Mac OS X

- If iPhoto or Image Capture are running, click on () in the upper left corner of the window to close the application.
- Double-click the [Canon ImageBrowser] icon on the desktop.
- Click [Canon Camera] in the Explorer View section.



Explorer View

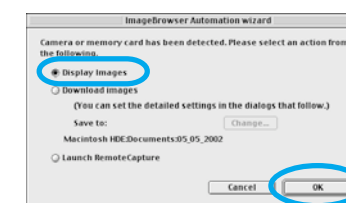
Once [Communication Settings] appears, click the [Set] button.



The name of your camera model or [Canon Camera] and the USB port number (e.g. @1) will appear here.

■ Mac OS 9

- Confirm that [Display Images] is selected and click the [OK] button.

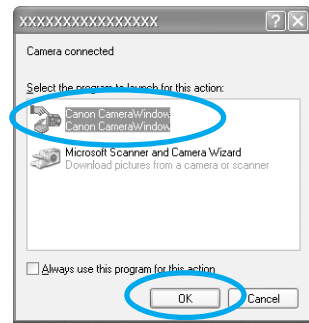


7 Downloading Images to a Computer

Windows

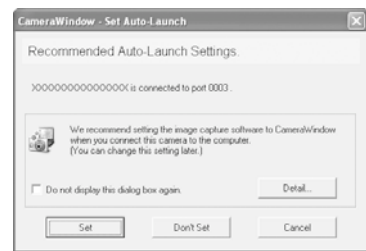
→ Software Starter Guide

A. Select [Canon CameraWindow] and click [OK].



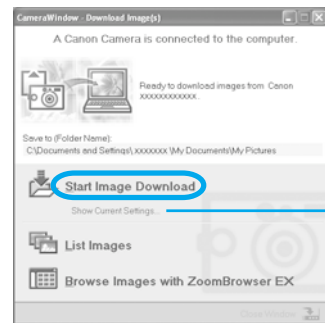
If the event dialog does not appear, click the [Start] menu, then select [Programs] or [All Programs], followed by [Canon Utilities], [CameraWindow] and [CameraWindow – Set Auto-Launch].

B. Click [Set] in the [CameraWindow – Set Auto-Launch] window.



C. In the [CameraWindow – Download Images], click [Start Image Download].

The downloaded images will appear as thumbnails (tiny versions) in the main window of ZoomBrowser EX.



Click here to confirm information such as the destination folder for images.

The downloaded images are saved into folders according to the shooting date.



Thumbnail

You can change the settings for the images to be downloaded and the downloading destination by clicking the [Camera] menu in ZoomBrowser EX's main window and selecting [Auto-download setting].

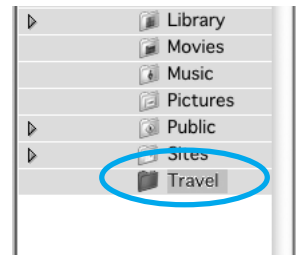
Image download is complete.

7 Downloading Images to a Computer

Macintosh

→ Software Starter Guide

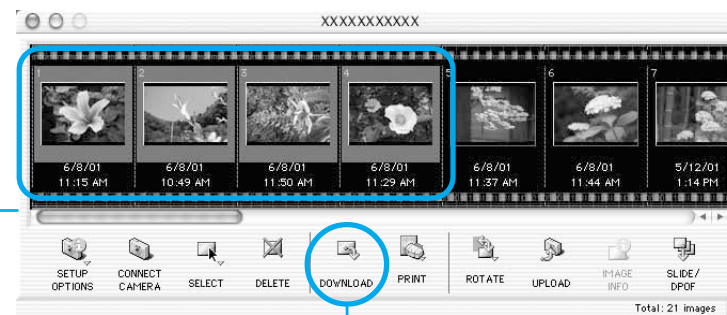
A. From the Explorer View section of the window, click the folder into which the images are to be downloaded.



Explorer View Section

B. Click the Camera Window, making it active. Click the images you wish to download and click [Download].

A blue frame will appear around the selected images.



Camera Window

Download Button

Downloaded images will appear as thumbnails (tiny versions) in the Browser area of ImageBrowser.



Thumbnail

Image download is complete.

A Guide to the Manuals

- Basic Method: *Software Starter Guide*
 - Advanced Method: PDF Manuals
- The manuals in PDF format shown below are available on the Canon website. Please download them from the following URL:
<http://web.canon.jp/Imaging/information-e.html>
- *ZoomBrowser EX Software User Guide* (Windows)
 - *ImageBrowser Software User Guide* (Macintosh)

Getting the Most out of the Software

→ Software Starter Guide

→ ZoomBrowser EX/
ImageBrowser Software
User Guides

What you can do with ZoomBrowser EX (Windows)/ ImageBrowser (Macintosh)

■ Downloading Images to a Computer

You can easily download images saved in the camera to a computer.

■ Checking Images

You can magnify images and check the information on them (the shooting date and time, the shooting settings, etc.)



■ Using the My Camera Settings

You can register images and sounds that you like for use as start-up images and sounds with the My Camera Settings.

■ Shooting with a Computer

You can operate the camera's shutter and take pictures from a computer.



■ Converting RAW images* to General File Formats

RAW images downloaded into a computer can be converted to general file formats, such as TIFF and JPEG, and saved as such.

*High-quality images in which the pixels from the CCD are recorded as is, without any deterioration in image quality.

■ Sending Images by E-mail

You can start your e-mail program from ZoomBrowser EX (Windows)/ ImageBrowser (Macintosh) and attach images to e-mail messages that you send.

What You Can Do with Other Software

You can use this software in even more advanced ways by linking it with other software.

■ Printing Images with Different Layouts

With PhotoRecord (Windows)/ImageBrowser (Macintosh), you can lay out images as desired and then print them.



■ Stitching Panoramic Images

With PhotoStitch, you can connect or "stitch" multiple images together into a seamless panoramic view.



Viewing the PDF Manuals

The software application Adobe Reader or Adobe Acrobat Reader is required to view the PDF manuals.

If one of these applications is not already installed on your computer, download it from the following website.

<http://www.adobe.com/products/acrobat/readstep2.html>