

The following manuals are supplied with your camera. Please refer to them as need be.

Contents of This Guide

Included accessories and separately sold equipment information.

1. Install the battery pack and the CF card.

2. Shoot images with the camera.

3. Play back the images.

4. Erase any unwanted images.

Learn the names of camera components.

5. Print the images.

6. Install the software.

Connect the camera to a computer.

Windows

Macintosh

7. Download the images to a computer.

Windows

Macintosh

What you can do with the software

The various ways of using the software

Reference Guides

System Map

This Guide

Quick Start Guide

Camera User Guide

Direct Print User Guide

Supplied with a printer

Printer User Guide

• Camera User Guide

• Software Starter Guide

• ZoomBrowser EX Software User Guide

• ImageBrowser Software User Guide

These PDF format manuals are available on the Canon website. Please download them from the following URL:

http://web.canon.jp/imaging/information-e.html

1

Preparing the Camera

→ Camera User Guide

A. Charge the battery pack.

Place the battery pack in the battery charger and plug the charger into a power outlet. The charge indicator lights red while charging and changes to green when the battery pack is charged.

Charging the battery pack takes approximately 100 minutes.

Charge Indicator

• Battery charger model names and types vary by region.

B. Install the battery pack.

Slide the battery cover open. Press the battery lock while inserting the battery pack all the way in, aligning the arrows on the camera and battery pack. Slide the battery cover closed.

Battery Lock

C. Install the CF card.

Slide the lock and open the CF card slot cover. Insert the CF card with its label facing upward until the CF card eject button fully extends. Close the CF card slot cover.

Lock

CF Card Eject Button

2

Shooting

→ Camera User Guide

A. Slide the mode switch to (Rec.) (1) and turn the Shooting mode dial to (Auto) (2).

B. Press the ON/OFF button to turn the camera on.

The power lamp will light.

Power Lamp

C. Set the date and time (first time the camera is powered on).

1 Use the buttons to select the items you wish to set, and the buttons to change the value.

2 Check that the date and time shown are correct, then press the SET button.

D. Aim the camera at the subject and adjust the zoom to achieve the desired composition (see "Zoom" in the "Quick Reference" section).

E. Focus and shoot.

1 Press the shutter button halfway to focus.

• The camera focuses and two beeps sound.

2 Press the shutter button all the way to shoot.

3

Playback

→ Camera User Guide

A. Slide the mode switch to (Playback).

B. Play back the images.

Use the buttons to display the image you wish to see.

4

Erasing an Image

→ Camera User Guide

A. Use the buttons to select the image you wish to erase (1) and press the button (2).

B. When the confirmation screen appears, check that [Erase] is selected and press the SET button.

Select [Cancel] using the buttons to cancel without erasing.

Quick Reference

→ Camera User Guide

Zoom

Wide Angle:

Zoom out from the subject.

Telephoto:

Zoom in on the subject.

* The zoom can be adjusted from 36 to 108 mm (35 mm film equivalent)

Shooting Modes

Auto

The camera automatically selects settings.

Manual

Allows you to change various settings to record with the desired effects.

Stitch Assist

Images shot in Stitch Assist mode can be merged together on a computer to make a single panoramic image.

Movie

For shooting movies.

Macro/Infinity Mode

Press the button to display the or on the LCD monitor.

in Display

Use this mode to shoot close-ups of flowers or small objects.

* Recordable Area at Minimum Shooting Range <Shooting Distance>

At wide angle end: approx. 58 x 43 mm (2.3 x 1.7 in.)

<From the front of lens: 5 cm (2.0 in.)>

At telephoto end: approx. 107 x 80 mm (4.2 x 3.1 in.)

<From the front of lens: 30 cm (1.0 ft.)>

in Display

Use this mode to shoot scenery or distant subjects.

This setting is not available in Auto mode.

Changing the Displayed Information

Press the DISP. button to switch the displayed information as follows.

Shooting Mode:

LCD Monitor - On (No Information)

▼

LCD Monitor - On (Information View)

▼

LCD Monitor - Off

Playback Mode:

Standard Information View

▼

Detailed Information View

▼

No Information

Switching between Shooting/Playback

Shooting:

Slide the mode switch to .

Playback:

Slide the mode switch to .

Flash

Press the button to switch between flash modes. (Some settings are not available with certain shooting modes.)

Auto

▼

Auto with red-eye reduction

▼

Flash on

▼

Flash off

▼

Slow-synchro

Recordable area: 46 cm - 2.0 m (1.5 - 6.6 ft.) (telephoto) / 46 cm - 3.5 m (1.5 - 11 ft.) (wide-angle)

* Red-eye reduction: This feature reduces the effect of light reflecting back from the eyes and making them appear red.

* Slow Synchro: The flash timing is adjusted to a slow shutter speed, allowing you to shoot night sceneries.

In addition, there are functions that can be set in each shooting mode. For details, see "Functions Available in Each Shooting Mode" at the end of the Camera User Guide.

5

Printing with a Direct Print Compatible Printer

→ Direct Print User Guide

A. Connect the camera to the printer and turn on the printer's power.

Set the camera to playback mode and turn the power on.

Camera

Interface Cable

Printers

B. appears* in the upper left corner of the camera's LCD monitor, indicating that the printer is ready to print.

* The displayed icon may vary depending on the printer model.

C. Choose the image you wish to print and press the SET button.

Select print settings as required.

Print Setting Screen

The screen may vary depending on the printer model.

D. Use the or button to select [Print] and press the SET button.

The printing of the image will start.

Please turn over

6 Preparing to Download Images to a Computer → Camera User Guide, Software Starter Guide

! Never connect the camera to the computer before the software is installed.

List of Things to Prepare

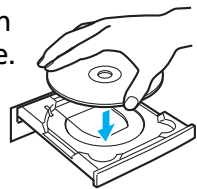
- Camera and Computer
- Canon Digital Camera Solution Disk provided with the camera
- Interface Cable (use the cable provided with the camera)

A. Confirm that the computer meets the system requirements.

See the *Camera User Guide*.

B. Install the software.

- a. Place the Canon Digital Camera Solution Disk into your computer's CD-ROM drive.



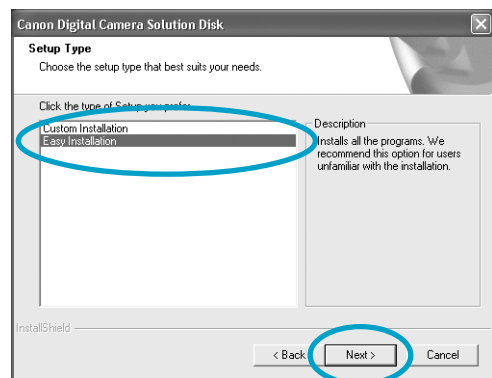
Macintosh

- With Mac OS X, double-click the CD-ROM icon, followed by the [Mac OS X] and [Canon Digital Camera Installer] icons.
- With Mac OS 9, double-click the CD-ROM icon, followed by the [Mac OS 9] and [Canon Digital Camera Installer] icons.

- b. Click the Digital Camera Software [Install] button and click [Next].

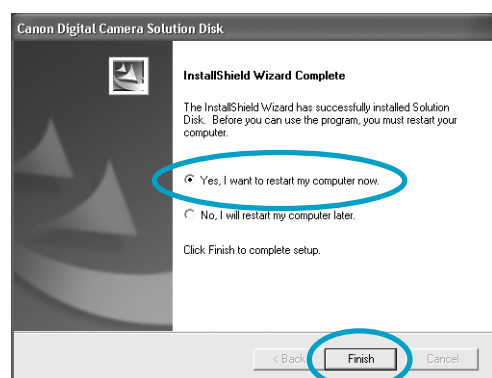


- c. Select [Easy Installation] and click [Next].



Proceed with the installation while reviewing installation settings.

- d. When the installation is complete, select [Yes, I want to restart my computer now.] in the screen below, and click [Finish].



Macintosh

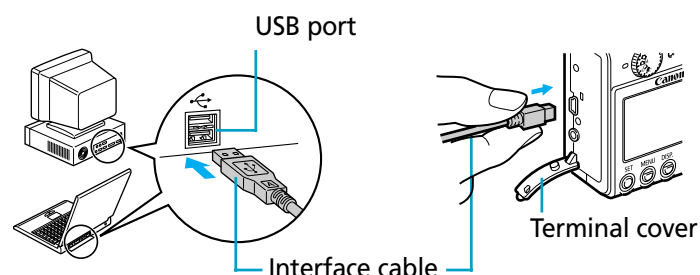
Once the installation is complete, click [Quit].

- e. Remove the disk from the CD-ROM drive after restarting.

C. Connect the camera to the computer.

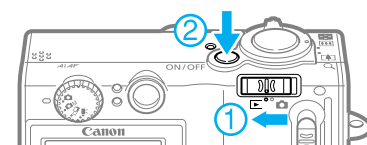
- a. Connect the supplied interface cable to the computer's USB port and the camera's DIGITAL terminal.

1. Open the terminal cover with your fingernail.
2. Securely insert the cable into the DIGITAL terminal and the USB port.



- b. Slide the mode switch to [Playback] (1) and press the ON/OFF button to turn the camera on (2).

The camera and computer will be ready to communicate with each other.



Windows

Windows XP

After a few moments, the dialog box shown to the right will appear and the USB driver provided with your Windows OS will automatically be installed.



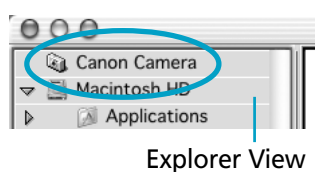
Windows 2000 / Windows Me / Windows 98

After a few moments, the Add New Hardware Wizard will appear and automatically install the USB driver.

Macintosh

Mac OS X

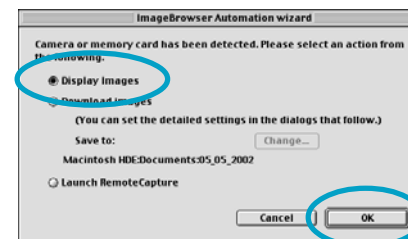
- If iPhoto or Image Capture are running, click on in the upper left corner of the window to close the application.
- Double-click the [Canon ImageBrowser] icon on the desktop.
- Click [Canon Camera] in the Explorer View section.



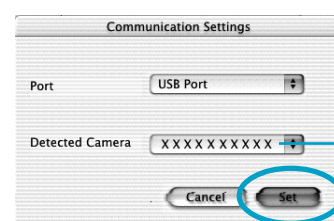
Explorer View

Mac OS 9

- Confirm that [Display Images] is selected and click the [OK] button.



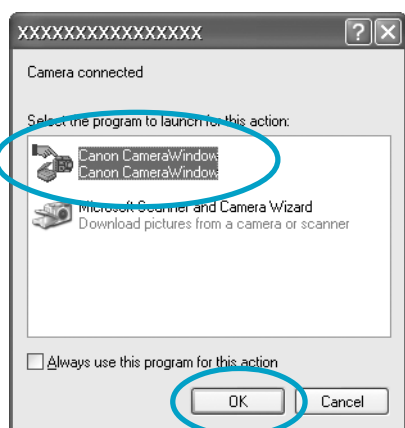
Once [Communication Settings] appears, click the [Set] button.



The name of your camera model or [Canon Camera] and the USB port number (e.g. @1) will appear here.

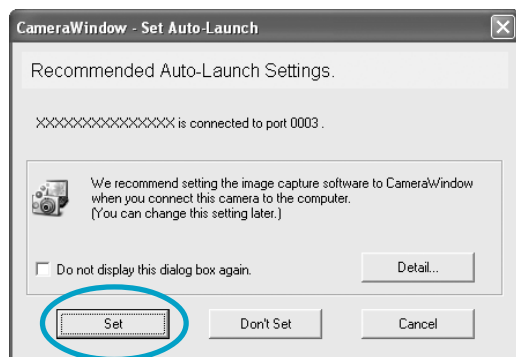
7 Downloading Images to a Computer Windows → Camera User Guide, Software Starter Guide

A. Select [Canon CameraWindow] and click [OK].

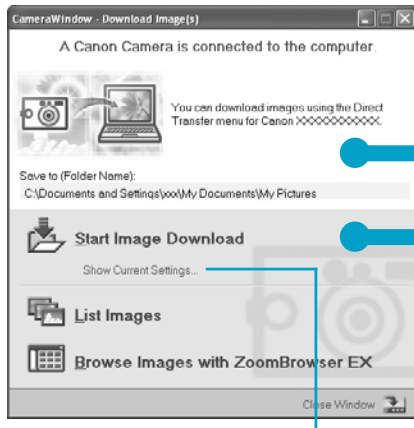


! If the event dialog does not appear, click the [Start] menu, then select [Programs] or [All Programs], followed by [Canon Utilities], [CameraWindow] and [CameraWindow - Set Auto-Launch].

B. Click [Set] in the [CameraWindow - Set Auto-Launch] window.



C. Select the image downloading method in the "CameraWindow - Download Image(s)" window.



You can confirm information such as the destination folder for images.

Downloading Images Using Computer Operations

- D. Click [Start Image Download].

The downloaded images will appear as thumbnails (tiny versions) in the main window of ZoomBrowser EX. Downloaded images are saved in separate folders according to the date on which they were shot.

You can change the settings for the images to be downloaded and the downloading destination by clicking the [Camera] menu in ZoomBrowser EX's main window and selecting [Auto-download setting].

Downloading Images Using Camera Operations (Direct Transfer)

- D. Confirm that the button lights blue.

- E. Confirm that is selected in the Direct Transfer menu in the camera's LCD monitor and press the button.



All the images on the camera's memory card will download. To selectively download images, use the Direct Transfer menu.

Thumbnail

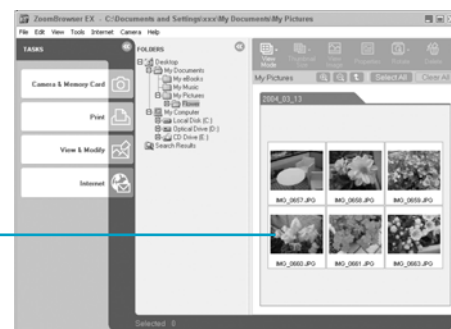
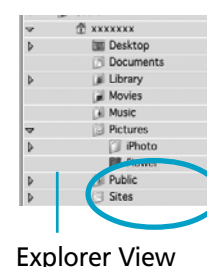


Image download is complete.

7 Downloading Images to a Computer Macintosh → Software Starter Guide

- A. Click the Browser Window, making it active. Then, from the Explorer View section of the window, click the folder into which the images are to be downloaded.



Explorer View

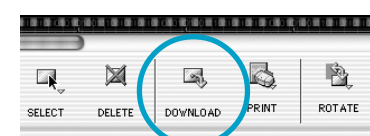
- B. Click the Camera Window, making it active. Click the images you wish to download

A blue frame will appear around the selected images.



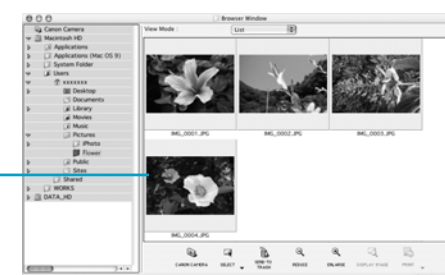
Camera Window

- C. Click [Download].



Downloaded images will appear as thumbnails (tiny versions) in the Browser area of ImageBrowser.

Thumbnail



Getting the Most out of the Software → Software Starter Guide, ZoomBrowser EX / ImageBrowser Software User Guide

What you can do with ZoomBrowser EX (Windows) / ImageBrowser (Macintosh)

Downloading Images to a Computer

You can easily download images saved in the camera to a computer.

Checking Images

You can magnify images and check the information on them (the shooting date and time, the shooting settings, etc.)

Using the My Camera Settings

You can register images and sounds that you like for use as start-up images and sounds with the My Camera Settings.

Shooting with a Computer

You can operate the camera's shutter and take pictures from a computer.

Sending Images by E-mail

You can start your e-mail program from ZoomBrowser EX (Windows) / ImageBrowser (Macintosh) and attach images to e-mail messages that you send.

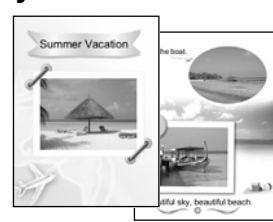


What you can do with Other Software

You can use this software in even more advanced ways by linking it with other software.

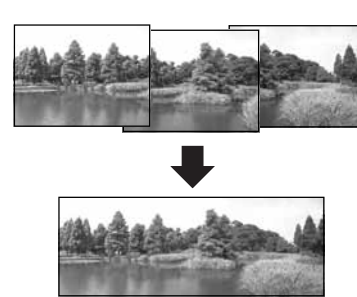
Printing Images with Different Layouts

With PhotoRecord (Windows)/ ImageBrowser (Macintosh), you can lay out images as desired and then print them.



Stitching Panoramic Images

With PhotoStitch, you can connect or "stitch" multiple images together into a seamless panoramic view.



A Guide to the Manuals

Basic Method: Software Starter Guide

Advanced Method: PDF Manuals

The manuals in PDF format shown below are available on the Canon website. Please download them from the following URL:

<http://web.canon.jp/Imaging/information-e.html>

- ZoomBrowser EX Software User Guide (Windows)
- ImageBrowser Software User Guide (Macintosh)

Viewing the PDF Manuals

The software application Adobe Reader or Adobe Acrobat Reader is required to view the PDF manuals. If one of these applications is not already installed on your computer, download it from the following website.
<http://www.adobe.com/products/acrobat/readstep2.html>