

| Code No. | Item |
|--------------|--------------------------------|
| C12-1801-882 | Canon AV-1 w/lens FD 50mm f1.8 |
| C12-1801-862 | Canon AV-1 w/lens FD 50mm f1.4 |
| C12-1801-211 | Canon AV-1 body only |

Canon AV-1

SLR Automatic Simplicity: A Great Introduction to Canon Quality.



DISCONTINUED PRODUCT
Please retain this section for reference purposes.

Specifications

Type: 35mm SLR (Single-lens Reflex) camera with electronically controlled AE (Automatic Exposure).

Format: 24 x 36mm.

Usable Lenses: Canon FD (for full aperture AE) and most FL (for stopped-down AE) series lenses.

Lens Mount: Canon Breech-lock mount.

Viewfinder: Fixed eye-level pentaprism.

Viewfinder Information: Split-image/micropism rangefinder, shutter speed scale and meter-needle, red over- and under-exposure warning indices, battery check/camera shake warning index.

AE Mechanism: Aperture priority AE control.

Selector Dial: Five Positions: **[A]** for normal aperture priority AE and automatic flash with Canon dedicated Speedlites, $60 \frac{1}{4}$ for flash photography with other flashes, **A** Self for self-timer aperture priority AE and self-timer flash with Canon Speedlites, **Self** for self-timer flash with other flashes, **B** (bulb) for time exposures.

Self-timer: Electronically controlled. Ten-second time lag activated by pressing shutter button. Red LED blinks to indicate operation; flashing frequency increases two sec. before shutter release. Cancellation possible by pressing battery check button.

Flash Synchronization: At 1/60 sec. Automatically set by switching selector dial to $60 \frac{1}{4}$ for flashes other than Canon Speedlites. Direct contact at accessory shoe.

Automatic Flash Control: With Canon Speedlites. With selector dial at **[A]**, shutter speed is set to 1/60th second automatically. Aperture is set manually on aperture ring to same aperture as set on flash exposure calculator dial.

Back Cover: Fixed. Opened by pulling up rewind knob.

Film Loading: Easy loading multi-slot take-up spool. Emulsion side-

out winding.

Film Advance Lever: Single-stroke 120° throw with 30° stand-off. Winding with several short strokes possible.

Frame Counter: Additive type. Automatically resets to "S" upon opening back cover.

Film Rewind: By pressing rewind button and cranking rewind knob. **Shutter:** Cloth, focal plane shutter.

Shutter Release Button: Electromagnetic, two-step button. Pressing it halfway activates the meter; pressing it all the way sets shutter in operation. With lock and cable release socket.

Exposure Preview: Meter needle activated by pressing the shutter button halfway.

Shutter Speed: Automatically controlled, steplessly, from 2 seconds to 1/1000th second. Manual settings for B (bulb) and X-synchronization speed of 1/60th sec, with flashes other than Canon Speedlites.

ASA Film Speed Dial: ASA 25 to ASA 1600. With lock.

Light Metering System: Through-the-lens Central Emphasis metering by SPC (Silicon Photocell).

Meter Coupling Range: EV1 (1 sec. at f/1.4) to EV18 (1/1000 sec. at f/16) with ASA 100 film and the FD 50mm f/1.4 lens.

Exposure Correction: Shutter speed is automatically reduced $1 \frac{1}{2}$ steps to increase exposure by pressing backlight control switch.

Power Source: One 6V silver oxide (Eveready (UCAR) No. 544, JIS 4G13, Mallory PX28) or alkaline manganese (Eveready (UCAR) No.537) battery.

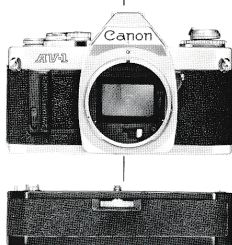
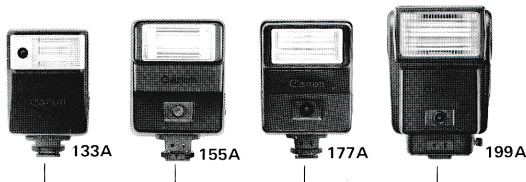
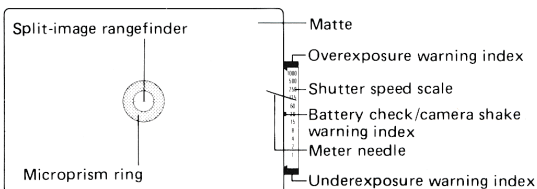
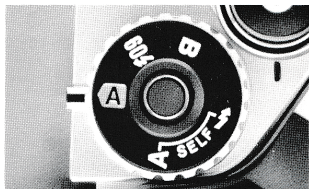
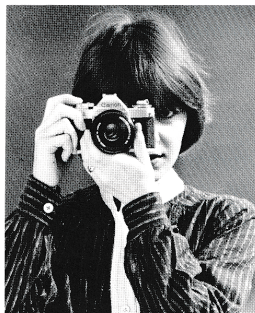
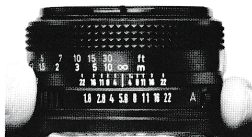
Battery Check: Meter needle-power level index method.

Dimension: 139(W) x 85(H) x 47.5mm(D) ($5 \frac{1}{2}$ " x $3 \frac{3}{8}$ " x $1 \frac{7}{8}$ ").

Weight: 490g (17 5/16 ozs.) body only, incl. battery.

640g (22.4 ozs.) with FD 50 mm f1.8 lens and battery.

SELLING POINTS



The Canon AV-1 is the perfect answer for the amateur photographer who, though he feels he has graduated from the elementary stage of photography, is daunted by the apparent complexity of SLR cameras. It introduces to such people the greater satisfaction and potential for artistic expression which 35mm photography provides. The AV-1 complements the A-series line-up of A-1, AE-1, and AT-1 and every one of the A-series models, including the new AV-1, has its own special qualities and features such as shutter priority automatic control, match needle operations, best suited to the photographic needs of your customers.

Just consider what the AV-1 has going for it:

- It's automatic — all you have to do is set the aperture, focus and shoot. Moreover, the AV-1's reliability, durability, excellent performance, and operational efficiency are based on a great deal of technical expertise in electronic control and production process for the reputed A-1 and AE-1.
- It's lightweight, compact and simple in construction, with only 525 parts, or 13% less in the number of parts and 17% less in weight compared to the AE-1.
- It's budget-priced: The AV-1 is one of the less expensive SLRs on the market. To put out a reasonably-priced camera, various selling features have been carefully considered and for the first time the aperture priority method in automatic exposure control is one of the foremost features for a Canon SLR model.
- It can be used with any of the wide range of Canon lenses. So, as your customer becomes more proficient in photography, he'll want to expand his creative horizons. And that means he'll come back to buy more lenses.

Unique Selector Dial makes picture-taking even easier

The user will be amazed at how easy the AV-1 is to operate. Instead of the usual shutter speed dial, there is a Selector Dial which serves as the control for most functions. Now all the photographer has to do is to set the dial to the red A mark (for automatic) before setting the aperture and focusing. In fact, usually you don't have to worry about the dial — just leave it at the A mark, even for flash photography in case of using Canon Speedlites.

In addition to this setting, there are $\frac{1}{2}$ 60 setting for any flash other than Canon Speedlites, including other electronic flashes, B (Bulb) for time exposures, and two self-timer settings: (1) A Self — for self-timer without flash or with Canon Speedlites, (2) Self $\frac{1}{2}$ for self-timer with other flashes.

Clear, unobscured viewfinder with full exposure information

The AV-1's viewfinder incorporates a split image/microprism rangefinder and its exceptional clarity and brightness assure easy, precise focusing.

Besides this, the shutter-speed scale is a mine of information to ensure you obtain perfect results every time. Besides telling you the shutter speed chosen by the camera to correspond to your selected aperture, the needle also provides warning when the battery has run down (when battery check button is pressed). As long as it rises above the index mark located to the left of '30', the battery is OK. What's more, it serves as a good guide as to whether there is a high risk of picture blur.

More than just a camera . . . an entire system

The AV-1 may be one of the simplest cameras to use, but that doesn't mean its potential is limited. There's a whole range of accessories and lenses to meet one's every photographic need. Practically all accessories which can be used for the AE-1 can also be used with the AV-1.

Canon Dedicated Speedlites

Attach any Canon Speedlite to the AV-1 and turn on the power. The Speedlite's electronic circuitry automatically sets the shutter speed to the 1/60 (flash synchronization) setting and varies light output for proper exposure with the working aperture selected on the aperture control ring.

Power Winder A:

To keep up with fast-moving subjects, attach the Power Winder A onto the bottom of the camera. Switch it on, press and hold the shutter release button. The film will be wound at about two frames/sec, to capture those fleeting moments. Single-frame shooting is possible too. And since the AV-1 is automatic, there's no problem with exposure.

NOMENCLATURE

